

EMBARGOED UNTIL 11.30 A.M. 19 JULY 1988

**LABOUR FORCE STATUS AND EDUCATIONAL
ATTAINMENT, AUSTRALIA**

FEBRUARY 1988

IAN CASTLES
Australian Statistician

• Commonwealth of Australia 1988

PHONE INQUIRIES • *about these statistics*—contact Mr Michael Maynard on Canberra (062) 52 7503 or any ABS State office.

• *about other statistics and ABS services*—contact Information Services on Canberra (062) 52 6627, 52 5402, 52 6007 or any ABS State office.

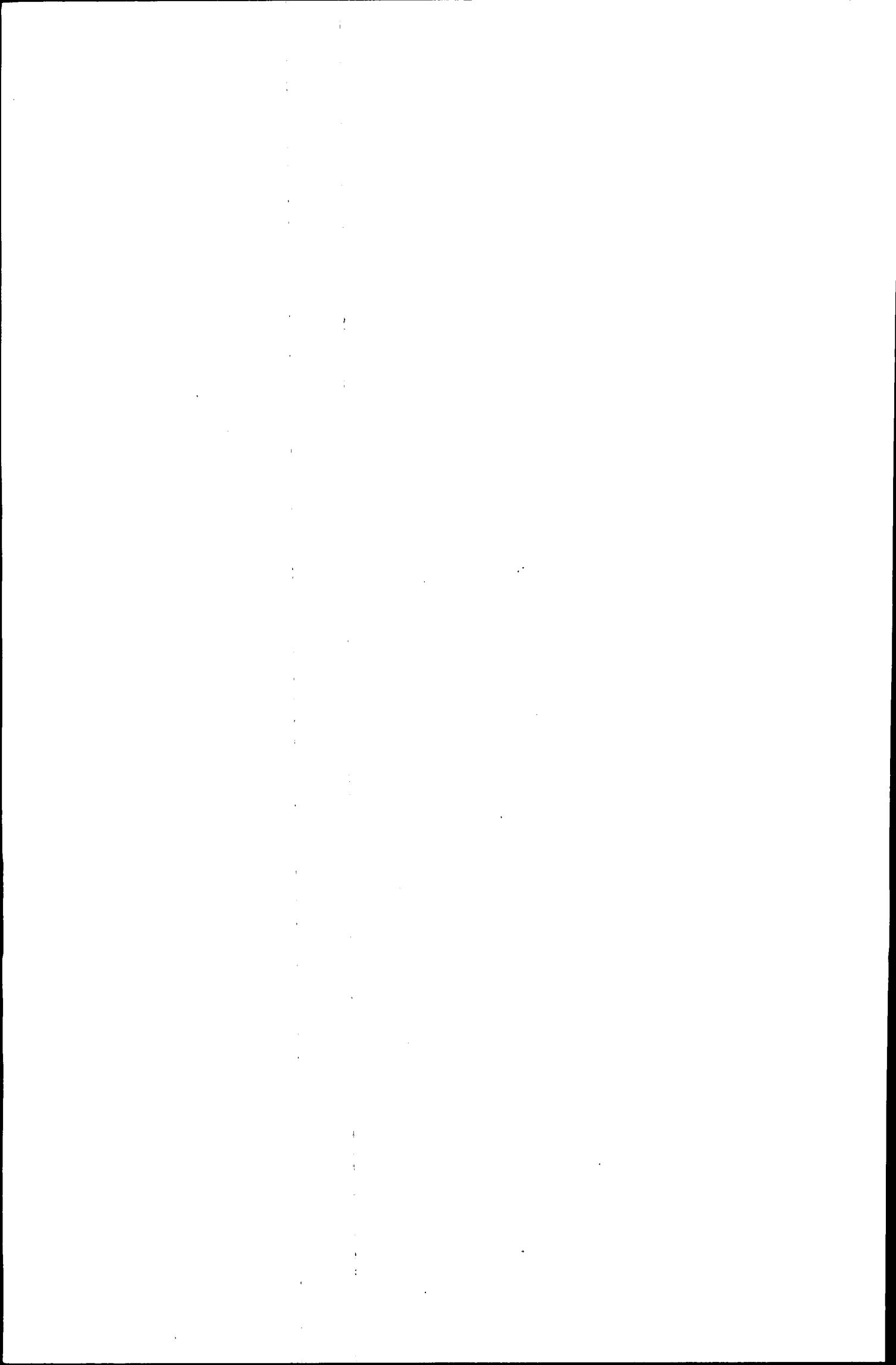
MAIL INQUIRIES • *write to Information Services*, ABS, P.O. Box 10, Belconnen, A.C.T. 2616 or any ABS State office.

ELECTRONIC SERVICES • on VIATEL — key *656#. • on AUSSTATS — phone (062) 52 6017.

• on TELESTATS — phone (062) 52 5404.

CONTENTS

<i>Table</i>		<i>Page</i>
..	Summary of Findings	1
	All persons, February 1983 to February 1988	
	Educational attainment and gender—	
1.	Labour force status	4
2.	Age	7
	Unemployed persons, February 1983 to February 1988	
3.	Unemployment rate, average and median duration of unemployment, educational attainment and gender	10
	All persons	
	Educational attainment and gender—	
4.	Labour force status	11
5.	Family status	12
	Persons with post-school qualifications	
6.	Main field of study, age, gender and labour force status	13
	Employed persons	
	Educational attainment and gender—	
7.	Industry	15
8.	Occupation	16
9.	Age	17
	Unemployed persons	
	Educational attainment—	
10.	Unemployment rate and unemployment/population ratio and age	18
11.	Age and gender	19
12.	Duration of current period of unemployment and gender	20
	Persons not in the labour force	
13.	Whether in the labour force in the last twelve months, educational attainment and main activity while not in the labour force	21
	Appendix	
A	Glossary	22
B	Explanatory Notes	23
C	Technical Note	25

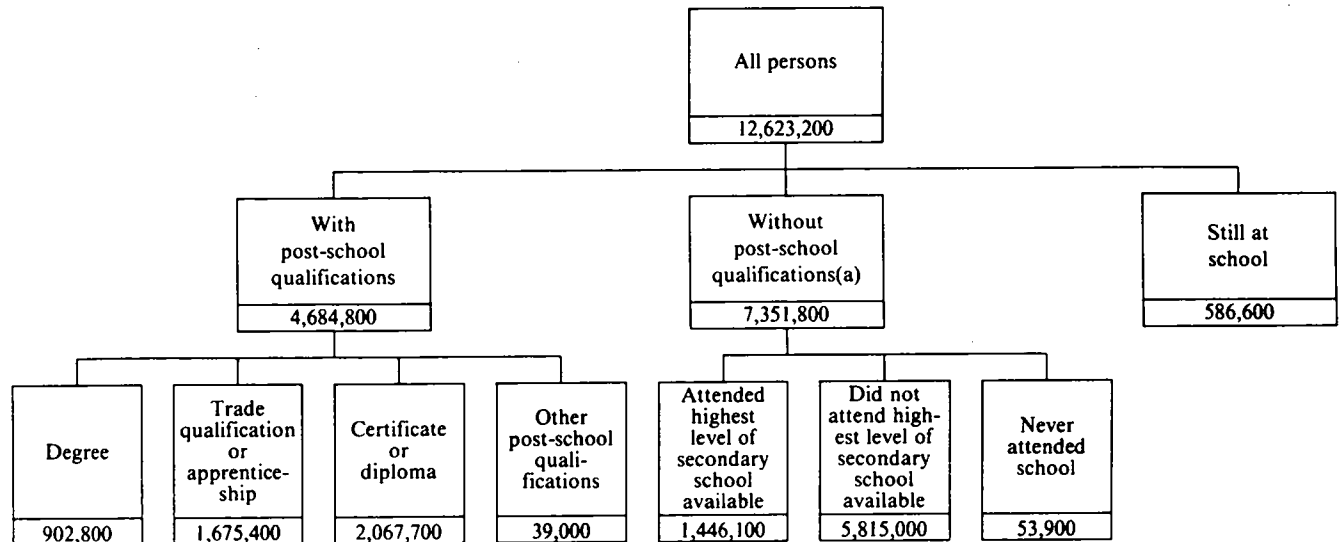


SUMMARY OF FINDINGS

Educational attainment

An estimated 4,684,000 persons with post-school qualifications made up 37.1 per cent of the civilian population aged 15 and over in February 1988. Those with no post-school qualifications numbered 7,351,800 (58.2 per cent) and 586,600 (4.6 per cent) were still at school. Of the 4,684,800 persons with post-school qualifications, 902,800 persons (19.3 per cent) had a degree or higher qualification (e.g. honours, masters or doctorate), 1,675,400 (35.8 per cent) had a trade qualification or apprenticeship, 2,067,700 (44.1 per cent) had a certificate or diploma, and 39,000 (0.8 per cent) had other forms of post-school qualifications. For those without post-school qualifications, about one in five (19.7 per cent) had attended the highest level of secondary school available.

DIAGRAM 1. ALL PERSONS : EDUCATIONAL ATTAINMENT
(Source of data : Table 4)

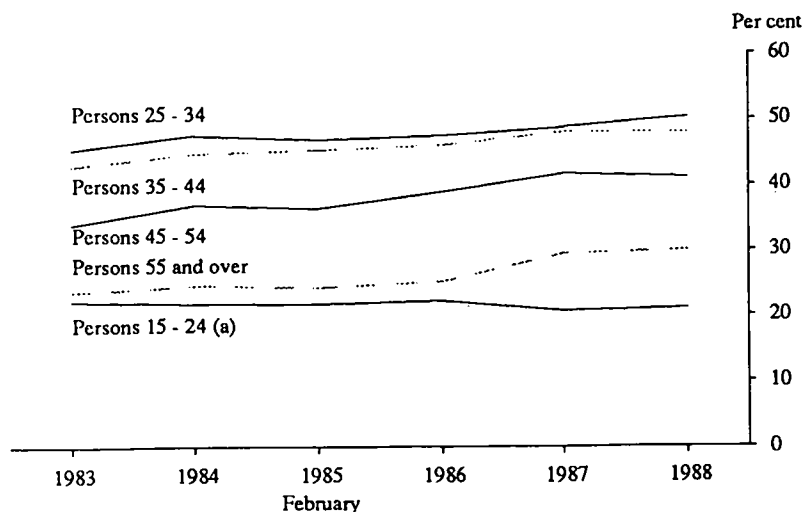


(a) Includes persons for whom secondary school qualifications could not be determined.

The trend towards a more qualified population, evident over the last five years, has continued in February 1988. While 32.9 per cent of persons had a post-school qualification in February 1983, the February 1988 estimate was 37.1 per cent, a rise of 4.2 percentage points. The rises for qualified males and females were comparable (4.5 percentage points for males and 4.0 percentage points for females), however differences were evident for some groups. For example, for persons aged 25 to 34 years there was an increase of 6.1 percentage points in the proportion of females with post-school qualifications, between 1983 and 1988, whereas for males, the increase was 3.5 percentage points.

The proportion of persons aged between 15 and 24 (excluding those still at school) with post-school qualifications, in contrast to the older age groups, has remained much the same over the period from February 1983 (26.5 per cent) to February 1988 (26.9 per cent). This comparatively lower level is greatly influenced by the numbers of persons within this age group who have yet to complete their full-time education.

DIAGRAM 2. ALL PERSONS : PROPORTION OF PERSONS WITH POST-SCHOOL QUALIFICATIONS BY AGE, FEBRUARY 1983 TO FEBRUARY 1988
(Source of data : Table 2)

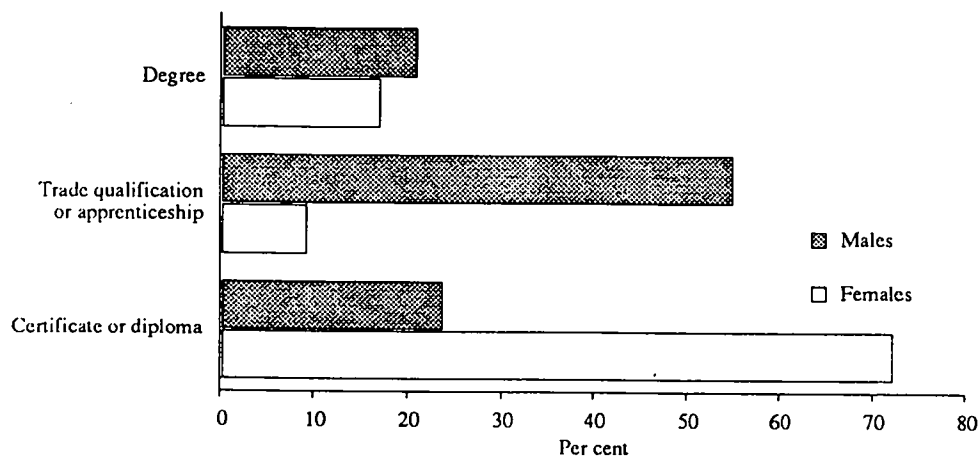


(a) Excludes those still at school.

Post-school qualifications

While a larger proportion of males had a post-school qualification than females (43.7 per cent and 30.7 per cent respectively), the difference is less marked for those who hold a degree or higher qualification (20.9 per cent of males with post-school qualifications and 17.0 per cent of females). On the other hand, trade qualifications or apprenticeships were predominantly a male qualification, with 55.0 per cent of all post-school qualified males holding such qualifications, compared with only 9.3 per cent of the equivalent female group. Certificates and diplomas on the other hand, were predominantly obtained by females (72.2 per cent compared to 23.8 per cent of males with a post-school qualification).

DIAGRAM 3. PERSONS WITH POST-SCHOOL QUALIFICATIONS : PROPORTION OF MALES AND FEMALES BY LEVEL OF POST-SCHOOL QUALIFICATION, FEBRUARY 1988
(Source of data: Table 1)



Persons with post-school qualifications in February 1988 were likely to be more active in the labour force than those without post-school qualifications. Their participation rate was higher (75.9 per cent), unemployment rate lower (5.2 per cent) and average duration of unemployment was amongst the shortest (38 weeks). Both males and females with degree qualifications had the highest participation rates — 89.2 per cent for males and 77.5 per cent for females. Males qualified in fields of administration or medicine had particularly high participation rates of 93.8 per cent and 93.6 per cent respectively. The highest participation rate for females was recorded by those qualified in law (88.3 per cent).

Industry

The distribution of employed persons with a post-school qualification varied across industry divisions. The industry division which had the highest proportion of employees with post-school qualifications was Community services (74.5 per cent of male employees and 66.0 per cent of female employees). These high proportions contrast with those in the Agriculture, forestry, fishing and hunting industry division where 25.8 per cent of male employees had a post-school qualification, and similarly for the Wholesale and retail trade industry division where 25.7 per cent of female employees held post-school qualifications.

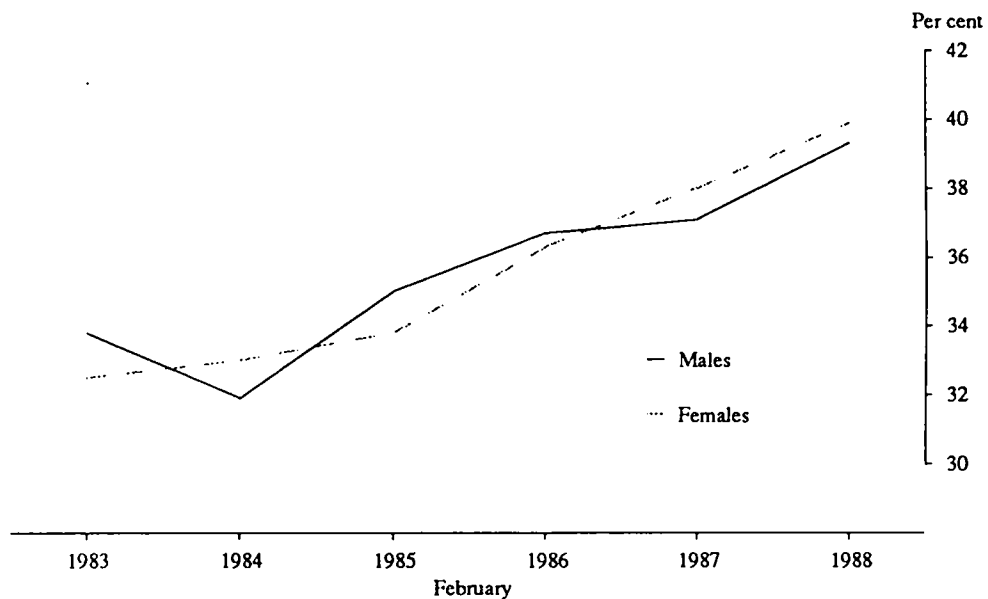
Occupation

The distribution of post-school qualifications across occupation major groups also varied. Persons employed as Professionals were the most qualified with 88.9 per cent of all male employees and 90.1 per cent of female employees having obtained a post-school qualification. Labourers and related workers were generally without post-school qualifications, with only 24.1 per cent of males and 15.2 per cent of females employed in that occupation major group having these qualifications. Female employees of the Plant and machine operators, and drivers occupation major group also had a low proportion of employees with post-school qualifications (15.4 per cent).

Without post-school qualifications

The trend toward higher education is evident for those without post-school qualifications, with a growing proportion of persons having attended the highest level of secondary school available. In February 1983, 33.2 per cent of 15 to 24 year olds (excluding those still at school) without post-school qualifications had attended the highest level of secondary school available, compared with 39.6 per cent of the same group in February 1988. A comparison across age groups shows that in February 1988, 8.6 per cent of those aged 55 and over without post-school qualifications had attended the highest available level, rising to a proportion of 25.3 per cent of the 25 to 34 cohort and 39.6 per cent of the 15 to 24 cohort.

**DIAGRAM 4. PERSONS AGED 15 TO 24 WITHOUT POST-SCHOOL QUALIFICATIONS:
PROPORTION OF MALES AND FEMALES WHO HAD ATTENDED THE HIGHEST
LEVEL OF SECONDARY SCHOOL AVAILABLE,
FEBRUARY 1983 TO FEBRUARY 1988**
(Source of data : Table 2)



Persons without post-school qualifications who had attended the highest level of secondary school available had, on average, a better chance of being employed than those who had not attended that level (64.6 per cent and 47.4 per cent respectively).

TABLE 1. ALL PERSONS: LABOUR FORCE STATUS AND EDUCATIONAL ATTAINMENT,
FEBRUARY 1983 TO FEBRUARY 1988
(' 000)

	1983	1984	1985	1986	1987(a)	1988(a)
MALES						
Employed	3,959.2	4,000.3	4,072.5	4,180.5	4,230.9	4,341.5
With post-school qualifications	1,789.6	1,881.2	1,894.1	1,991.6	2,091.9	2,171.1
Degree	386.9	425.1	435.6	456.7	456.8	493.1
Trade qualification or apprenticeship	1,368.6	1,424.9	1,410.0	1,490.4	1,129.8	1,150.6
Certificate or diploma						
Other	34.1	31.2	48.5	44.5	10.1	6.9
Without post-school qualifications(b)	2,144.1	2,081.3	2,142.7	2,147.4	2,086.1	2,120.3
Attended highest level of secondary school available	487.0	454.3	505.4	502.4	516.5	547.3
Did not attend highest level of secondary school available	1,651.3	1,618.9	1,631.7	1,639.5	1,556.5	1,551.4
Left at age—						
16 and over	542.4	544.5	573.4	590.8	596.3	604.0
15 and under	1,108.9	1,074.4	1,058.3	1,048.7	960.2	947.4
Still at school	25.5	37.8	35.7	41.5	52.9	50.0
Unemployed	440.8	435.8	390.4	367.9	395.4	354.7
With post-school qualifications	124.6	118.6	94.4	88.7	97.6	93.3
Degree	14.5	18.9	12.5	12.7	14.5	13.2
Trade qualification or apprenticeship	106.5	96.7	77.7	70.0	59.9	56.0
Certificate or diploma						
Other	*	*	*	6.0	*	*
Without post-school qualifications(b)	303.6	301.6	284.0	262.2	279.6	242.5
Attended highest level of secondary school available	59.0	60.6	60.3	54.0	61.0	50.2
Did not attend highest level of secondary school available	243.0	238.5	223.0	207.6	216.5	189.6
Left at age—						
16 and over	91.9	89.0	79.3	69.6	83.2	78.4
15 and under	151.2	149.5	143.7	138.0	133.3	111.2
Still at school	12.6	15.6	12.0	17.0	18.2	18.8
Labour force	4,400.0	4,436.2	4,462.9	4,548.5	4,626.3	4,696.1
With post-school qualifications	1,914.2	1,999.8	1,988.5	2,080.4	2,189.5	2,264.5
Degree	401.4	444.1	448.0	469.4	471.3	506.2
Trade qualification or apprenticeship	1,475.1	1,521.6	1,487.7	1,560.4	1,189.7	1,206.6
Certificate or diploma						
Other	37.7	34.1	52.8	50.6	11.3	8.2
Without post-school qualifications(b)	2,447.7	2,382.9	2,426.7	2,409.7	2,365.7	2,362.8
Attended highest level of secondary school available	546.1	514.9	565.7	556.3	577.5	597.5
Did not attend highest level of secondary school available	1,894.3	1,857.5	1,854.7	1,847.1	1,773.0	1,741.0
Left at age—						
16 and over	634.2	633.6	652.7	660.4	679.5	682.5
15 and under	1,260.1	1,223.9	1,202.0	1,186.7	1,093.5	1,058.5
Still at school	38.1	53.5	47.7	58.4	71.1	68.8
Not in labour force	1,187.7	1,237.5	1,309.5	1,409.2	1,466.0	1,520.1
With post-school qualifications	275.0	297.4	320.0	358.4	433.5	451.2
Degree	42.4	49.0	57.0	56.7	60.4	61.1
Trade qualification or apprenticeship	226.4	244.3	256.2	294.0	277.7	285.7
Certificate or diploma						
Other	6.2	*	6.8	7.7	*	*
Without post-school qualifications(b)	748.0	754.2	803.0	858.7	818.6	851.2
Attended highest level of secondary school available	109.3	103.7	107.3	134.9	119.2	131.7
Did not attend highest level of secondary school available	625.5	642.0	681.8	712.3	683.8	703.9
Left at age—						
16 and over	80.8	72.2	83.7	100.9	98.6	109.5
15 and under	544.7	569.8	598.1	611.4	585.1	594.4
Still at school	164.7	185.9	186.5	192.1	213.9	217.7
All males	5,587.7	5,673.7	5,772.4	5,957.7	6,092.3	6,216.2
With post-school qualifications	2,189.2	2,297.2	2,308.5	2,438.8	2,623.0	2,715.7
Degree	443.7	493.1	505.1	526.2	531.7	567.3
Trade qualification or apprenticeship	1,701.4	1,765.9	1,743.9	1,854.4	1,467.4	1,492.3
Certificate or diploma						
Other	44.0	38.2	59.5	58.2	13.2	9.4
Without post-school qualifications(b)	3,195.7	3,137.1	3,229.7	3,268.3	3,184.3	3,214.0
Attended highest level of secondary school available	655.4	618.6	673.1	691.3	696.8	729.2
Did not attend highest level of secondary school available	2,519.8	2,499.5	2,536.5	2,559.5	2,456.7	2,444.9
Left at age—						
16 and over	715.0	705.7	736.3	761.3	778.1	792.0
15 and under	1,804.7	1,793.7	1,800.1	1,798.2	1,678.6	1,652.9
Still at school	202.8	239.5	234.2	250.6	285.0	286.5

For footnotes see end of table.

**TABLE 1. ALL PERSONS: LABOUR FORCE STATUS AND EDUCATIONAL ATTAINMENT,
FEBRUARY 1983 TO FEBRUARY 1988—continued**
(' 000)

	1983	1984	1985	1986	1987(a)	1988(a)
FEMALES						
<i>Employed</i>	2,295.8	2,365.7	2,503.7	2,646.8	2,767.3	2,877.7
With post-school qualifications	864.6	918.8	1,011.8	1,075.4	1,147.7	1,199.1
Degree	170.8	184.3	227.2	237.7	230.4	245.7
Trade qualification or apprenticeship	667.5	704.1	742.8	792.6	88.1	82.3
Certificate or diploma						
Other	26.3	30.4	41.8	45.1	15.3	12.4
Without post-school qualifications(b)	1,393.4	1,399.2	1,442.3	1,512.4	1,553.5	1,607.5
Attended highest level of secondary school available	292.7	333.3	327.9	355.8	370.8	387.6
Did not attend highest level of secondary school available	1,096.8	1,061.5	1,113.3	1,152.8	1,168.6	1,205.2
Left at age—						
16 and over	389.6	387.0	426.8	468.0	468.4	506.5
15 and under	707.2	674.5	686.5	684.8	700.2	698.7
Still at school	37.8	47.7	49.6	59.0	66.1	71.1
<i>Unemployed</i>	305.9	301.9	283.2	295.3	304.2	288.1
With post-school qualifications	87.4	88.5	70.6	83.1	83.2	91.2
Degree	15.0	14.2	11.2	14.8	11.1	14.2
Trade qualification or apprenticeship	68.9	71.1	53.7	60.6	5.7	6.8
Certificate or diploma						
Other	*	*	5.7	7.7	*	*
Without post-school qualifications(b)	206.0	198.0	192.8	193.0	197.3	174.9
Attended highest level of secondary school available	43.3	41.4	41.2	45.6	49.7	48.0
Did not attend highest level of secondary school available	161.5	156.1	151.7	145.9	145.9	124.3
Left at age—						
16 and over	66.7	62.6	65.9	64.1	63.0	54.6
15 and under	94.8	93.5	85.8	81.8	82.9	69.6
Still at school	12.5	15.4	19.8	19.2	23.7	22.0
<i>Labour force</i>	2,601.7	2,667.6	2,787.0	2,942.2	3,071.5	3,165.8
With post-school qualifications	952.0	1,007.2	1,082.4	1,158.5	1,230.9	1,290.2
Degree	185.7	198.5	238.4	252.5	241.6	259.8
Trade qualification or apprenticeship	736.5	775.2	796.5	853.3	93.9	89.1
Certificate or diploma						
Other	29.8	33.5	47.5	52.7	17.3	14.4
Without post-school qualifications(b)	1,599.4	1,597.3	1,635.2	1,705.4	1,750.9	1,782.4
Attended highest level of secondary school available	336.1	374.7	369.1	401.5	420.5	435.6
Did not attend highest level of secondary school available	1,258.3	1,217.6	1,264.9	1,298.6	1,314.5	1,329.5
Left at age—						
16 and over	456.3	449.5	492.7	532.1	531.4	561.1
15 and under	802.0	768.1	772.2	766.5	783.1	768.4
Still at school	50.3	63.1	69.4	78.3	89.8	93.1
<i>Not in labour force</i>	3,073.9	3,147.1	3,136.7	3,201.2	3,207.9	3,241.2
With post-school qualifications	561.7	632.7	584.6	616.1	673.4	678.9
Degree	63.5	71.9	73.0	86.1	77.8	75.6
Trade qualification or apprenticeship	471.9	532.9	482.4	493.6	90.3	94.0
Certificate or diploma						
Other	26.3	27.9	29.2	36.4	12.9	15.2
Without post-school qualifications(b)	2,351.9	2,350.5	2,386.6	2,416.2	2,352.0	2,355.4
Attended highest level of secondary school available	280.8	281.8	286.7	282.0	278.3	281.4
Did not attend highest level of secondary school available	2,043.2	2,043.6	2,070.0	2,108.8	2,036.9	2,040.6
Left at age—						
16 and over	385.0	417.5	436.4	431.1	426.0	432.0
15 and under	1,658.2	1,626.1	1,633.6	1,677.7	1,610.9	1,608.5
Still at school	160.3	163.9	165.5	168.9	182.5	206.9
All females	5,675.7	5,814.7	5,923.7	6,143.4	6,279.5	6,407.0
With post-school qualifications	1,513.7	1,640.0	1,667.0	1,774.6	1,904.3	1,969.1
Degree	249.2	270.4	311.4	338.6	319.4	335.5
Trade qualification or apprenticeship	1,208.3	1,308.1	1,278.8	1,346.9	184.2	183.1
Certificate or diploma						
Other	56.2	61.4	76.8	89.1	30.3	29.6
Without post-school qualifications(b)	3,951.3	3,947.7	4,021.8	4,121.6	4,102.9	4,137.9
Attended highest level of secondary school available	616.9	656.5	655.7	683.5	698.9	716.9
Did not attend highest level of secondary school available	3,301.5	3,261.1	3,335.0	3,407.4	3,351.4	3,370.1
Left at age—						
16 and over	841.3	867.0	929.2	963.2	957.4	993.2
15 and under	2,460.2	2,394.1	2,405.8	2,444.2	2,394.0	2,376.9
Still at school	210.7	227.0	234.9	247.2	272.3	300.0

For footnotes see end of table.

**TABLE 1. ALL PERSONS: LABOUR FORCE STATUS AND EDUCATIONAL ATTAINMENT,
FEBRUARY 1983 TO FEBRUARY 1988—continued**
(* 000)

	1983	1984	1985	1986	1987(a)	1988(a)
PERSONS						
<i>Employed</i>	6,255.0	6,366.0	6,576.3	6,827.4	6,998.2	7,219.1
With post-school qualifications	2,654.2	2,800.0	2,905.9	3,067.0	3,239.6	3,370.2
Degree	557.7	609.4	662.8	694.4	687.3	738.8
Trade qualification or apprenticeship	2,036.1	2,129.0	2,152.8	2,283.0	1,217.9	1,232.9
Certificate or diploma						
Other	60.5	61.6	90.3	89.6	25.4	19.3
Without post-school qualifications(b)	3,537.4	3,480.5	3,585.0	3,659.8	3,639.6	3,727.8
Attended highest level of secondary school available	779.7	787.6	833.3	858.2	887.4	934.8
Did not attend highest level of secondary school available	2,748.1	2,680.4	2,745.0	2,792.3	2,725.0	2,756.6
Left at age—						
16 and over	932.0	931.5	1,000.2	1,058.8	1,064.6	1,110.5
15 and under	1,816.1	1,748.9	1,744.8	1,733.5	1,660.4	1,646.1
Still at school	63.3	85.5	85.3	100.5	119.0	121.1
<i>Unemployed</i>	746.7	737.8	673.6	663.3	699.6	642.8
With post-school qualifications	212.0	207.1	165.0	171.8	180.8	184.5
Degree	29.5	33.1	23.7	27.5	25.6	27.3
Trade qualification or apprenticeship	175.4	167.8	131.4	130.6	65.7	62.8
Certificate or diploma						
Other	7.1	6.2	9.9	13.7	*	*
Without post-school qualifications(b)	509.6	499.6	476.8	455.2	476.9	417.5
Attended highest level of secondary school available	102.3	102.0	101.5	99.6	110.7	98.2
Did not attend highest level of secondary school available	404.5	394.6	374.7	353.5	362.4	313.9
Left at age—						
16 and over	158.6	151.6	145.2	133.7	146.2	133.0
15 and under	246.0	243.0	229.5	219.8	216.2	180.8
Still at school	25.1	31.0	31.8	36.2	41.9	40.8
<i>Labour force</i>	7,001.7	7,103.8	7,249.9	7,490.6	7,697.8	7,861.9
With post-school qualifications	2,866.2	3,007.0	3,070.9	3,238.9	3,420.4	3,554.7
Degree	587.1	642.6	686.4	721.9	712.9	766.1
Trade qualification or apprenticeship	2,211.6	2,296.8	2,284.2	2,413.7	1,283.6	1,295.7
Certificate or diploma						
Other	67.5	67.6	100.3	103.3	28.7	22.6
Without post-school qualifications(b)	4,047.1	3,980.2	4,061.9	4,115.1	4,116.5	4,145.3
Attended highest level of secondary school available	882.2	889.6	934.8	957.8	998.1	1,033.0
Did not attend highest level of secondary school available	3,152.6	3,075.0	3,119.6	3,145.7	3,087.5	3,070.5
Left at age—						
16 and over	1,090.5	1,083.1	1,145.4	1,192.5	1,210.9	1,243.6
15 and under	2,062.1	1,992.0	1,974.2	1,953.2	1,876.6	1,826.9
Still at school	88.4	116.6	117.1	136.7	160.9	161.9
<i>Not in labour force</i>	4,261.6	4,384.7	4,446.2	4,610.4	4,673.9	4,761.3
With post-school qualifications	836.7	930.1	904.6	974.5	1,106.9	1,130.1
Degree	105.9	120.9	130.0	142.8	138.2	136.7
Trade qualification or apprenticeship	698.3	777.2	738.6	787.6	368.0	379.7
Certificate or diploma						
Other	32.6	32.0	36.0	44.1	14.8	16.3
Without post-school qualifications(b)	3,099.9	3,104.7	3,189.6	3,274.9	3,170.6	3,206.6
Attended highest level of secondary school available	390.1	385.5	394.0	416.9	397.5	413.1
Did not attend highest level of secondary school available	2,668.7	2,685.6	2,751.8	2,821.1	2,720.6	2,744.5
Left at age—						
16 and over	465.8	489.7	520.1	532.0	524.6	541.6
15 and under	2,202.9	2,195.9	2,231.7	2,289.1	2,196.0	2,202.9
Still at school	325.0	349.8	352.0	361.0	396.4	424.6
<i>All persons</i>	11,263.4	11,488.4	11,696.1	12,101.1	12,371.7	12,623.2
With post-school qualifications	3,702.9	3,937.1	3,975.5	4,213.4	4,527.3	4,684.8
Degree	693.0	763.5	816.4	864.8	851.1	902.8
Trade qualification or apprenticeship	2,909.8	3,074.0	3,022.8	3,201.3	1,651.6	1,675.4
Certificate or diploma						
Other	100.2	99.6	136.3	147.3	43.4	39.0
Without post-school qualifications(b)	7,147.0	7,084.8	7,251.5	7,389.9	7,287.2	7,351.8
Attended highest level of secondary school available	1,272.3	1,275.1	1,328.8	1,374.8	1,395.6	1,446.1
Did not attend highest level of secondary school available	5,821.3	5,760.6	5,871.4	5,966.9	5,808.1	5,815.0
Left at age—						
16 and over	1,556.3	1,572.7	1,665.5	1,724.5	1,735.5	1,785.2
15 and under	4,264.9	4,187.8	4,205.9	4,242.4	4,072.6	4,029.8
Still at school	413.5	466.5	469.2	497.8	557.3	586.6

(a) Prior to February 1987 the data now published in the Educational Attainment categories 'Trade qualification or apprenticeship' and 'Certificate or diploma' was published as 'Trade, technical or other certificate'. See paragraph 14 of the Explanatory Notes, Appendix B. (b) Includes persons who never attended school and those for whom secondary school qualifications could not be determined.

**TABLE 2. ALL PERSONS: AGE AND EDUCATIONAL ATTAINMENT,
FEBRUARY 1983 TO FEBRUARY 1988
(' 000)**

	1983	1984	1985	1986	1987(a)	1988(a)
MALES						
15-24	1,301.1	1,294.8	1,300.5	1,336.0	1,356.4	1,367.5
With post-school qualifications	275.1	270.8	269.1	282.6	260.7	265.9
Degree	41.7	41.0	41.8	34.0	44.8	36.6
Trade qualification or apprenticeship Certificate or diploma	223.0	220.8	216.1	233.8	161.3	163.5
Other	10.4	9.0	11.3	14.8	52.1	62.6
					*	*
Without post-school qualifications(b)	823.2	784.5	797.1	802.8	810.7	815.0
Attended highest level of secondary school available	278.2	250.5	278.6	294.6	301.0	320.6
Did not attend highest level of secondary school available	545.0	533.5	518.3	507.7	507.8	492.6
Still at school	202.8	239.5	234.2	250.6	285.0	286.5
25-34	1,206.3	1,246.8	1,258.5	1,283.6	1,308.0	1,332.1
With post-school qualifications	625.7	658.9	656.9	671.5	699.2	738.6
Degree	158.0	177.5	168.2	172.2	175.5	193.3
Trade qualification or apprenticeship Certificate or diploma	455.8	474.0	470.4	484.5	367.3	385.4
Other	12.0	7.4	18.3	14.8	151.3	156.6
					5.1	*
Without post-school qualifications(b)	580.5	587.9	601.7	612.1	608.7	593.5
Attended highest level of secondary school available	155.1	165.9	170.0	167.7	185.8	179.1
Did not attend highest level of secondary school available	423.8	419.7	429.7	442.3	419.0	409.1
35-44	1,043.6	1,016.2	1,083.2	1,128.1	1,169.8	1,210.5
With post-school qualifications	545.4	544.7	582.6	608.7	656.3	679.4
Degree	117.7	132.8	145.3	156.4	156.3	171.7
Trade qualification or apprenticeship Certificate or diploma	418.8	402.2	423.8	439.4	328.9	334.3
Other	9.0	9.7	13.5	12.9	168.8	172.0
					*	*
Without post-school qualifications(b)	498.2	471.5	500.6	519.4	513.5	531.1
Attended highest level of secondary school available	85.8	80.8	93.0	94.4	95.8	105.7
Did not attend highest level of secondary school available	409.7	388.0	403.9	423.4	412.5	418.3
45-54	752.5	800.2	779.4	794.3	814.6	836.9
With post-school qualifications	325.3	376.9	354.9	386.8	423.1	435.2
Degree	55.9	62.8	71.2	79.5	70.0	80.9
Trade qualification or apprenticeship Certificate or diploma	263.1	307.3	276.1	299.9	251.6	241.3
Other	6.3	6.8	7.6	7.5	100.5	112.4
					*	*
Without post-school qualifications(b)	427.2	423.3	424.6	407.4	391.5	401.7
Attended highest level of secondary school available	50.9	43.9	46.6	48.8	41.1	45.7
Did not attend highest level of secondary school available	371.2	374.8	374.3	354.8	345.0	346.3
55 and over	1,284.3	1,315.8	1,350.7	1,415.6	1,443.5	1,469.3
With post-school qualifications	417.6	445.8	445.0	489.1	583.7	596.6
Degree	70.5	78.9	78.7	84.1	85.1	84.8
Trade qualification or apprenticeship Certificate or diploma	340.8	361.6	357.5	396.7	358.3	367.8
Other	6.3	5.2	8.9	8.3	138.1	143.1
					*	*
Without post-school qualifications(b)	866.6	870.0	905.7	926.6	859.9	872.7
Attended highest level of secondary school available	85.3	77.6	85.0	85.8	73.2	78.1
Did not attend highest level of secondary school available	770.0	783.4	810.3	831.3	772.5	778.7
All males	5,587.7	5,673.7	5,772.4	5,957.7	6,092.3	6,216.2
With post-school qualifications	2,189.2	2,297.2	2,308.5	2,438.8	2,623.0	2,715.7
Degree	443.7	493.1	505.1	526.2	531.7	567.3
Trade qualification or apprenticeship Certificate or diploma	1,701.4	1,765.9	1,743.9	1,854.4	1,467.4	1,492.3
Other	44.0	38.2	59.5	58.2	610.7	646.7
					13.2	9.4
Without post-school qualifications(b)	3,195.7	3,137.1	3,229.7	3,268.3	3,184.3	3,214.0
Attended highest level of secondary school available	655.4	618.6	673.1	691.3	696.8	729.2
Did not attend highest level of secondary school available	2,519.8	2,499.5	2,536.5	2,559.5	2,456.7	2,444.9
Still at school	202.8	239.5	234.2	250.6	285.0	286.5

For footnotes see end of table.

**TABLE 2. ALL PERSONS : AGE AND EDUCATIONAL ATTAINMENT,
FEBRUARY 1983 TO FEBRUARY 1988—continued**
(' 000)

	1983	1984	1985	1986	1987(a)	1988(a)
FEMALES						
15-24	1,262.3	1,284.7	1,286.6	1,305.6	1,322.9	1,332.3
With post-school qualifications	294.7	292.5	291.8	303.9	289.9	302.8
Degree	36.9	36.3	42.5	44.5	41.1	42.2
Trade qualification or apprenticeship	} 246.6	} 243.3	} 231.5	} 241.8	} 24.1	} 27.7
Certificate or diploma						
Other	11.1	13.0	17.8	17.6	5.0	4.6
Without post-school qualifications(b)	757.0	765.1	759.8	754.5	760.7	729.5
Attended highest level of secondary school available	246.0	252.3	257.0	274.2	288.8	291.4
Did not attend highest level of secondary school available	510.8	511.0	502.3	479.2	469.5	436.1
Still at school	210.7	227.0	234.9	247.2	272.3	300.0
25-34	1,218.1	1,248.3	1,263.3	1,281.7	1,308.5	1,335.5
With post-school qualifications	474.8	527.7	524.7	546.1	574.0	602.3
Degree	105.7	119.0	130.3	140.2	130.1	144.2
Trade qualification or apprenticeship	} 358.2	} 392.2	} 374.9	} 385.4	} 37.8	} 34.2
Certificate or diploma						
Other	10.9	16.5	19.6	20.5	397.3	417.3
Without post-school qualifications(b)	743.3	720.6	738.6	735.7	734.5	733.3
Attended highest level of secondary school available	132.5	135.5	145.1	153.9	158.9	156.1
Did not attend highest level of secondary school available	608.7	582.3	591.4	580.3	569.1	571.7
35-44	1,009.2	1,043.8	1,059.1	1,101.3	1,143.7	1,187.3
With post-school qualifications	336.0	378.3	388.5	416.0	450.8	469.6
Degree	60.1	65.4	75.9	83.2	85.2	88.3
Trade qualification or apprenticeship	} 260.6	} 300.9	} 293.4	} 310.1	} 42.9	} 37.2
Certificate or diploma						
Other	15.3	12.0	19.2	22.6	317.1	337.3
Without post-school qualifications(b)	673.2	665.5	670.5	685.3	692.9	717.6
Attended highest level of secondary school available	76.2	85.7	83.4	86.7	89.7	101.9
Did not attend highest level of secondary school available	593.7	576.1	584.9	595.2	594.7	607.3
45-54	715.2	753.9	749.4	761.9	781.2	803.1
With post-school qualifications	173.8	197.4	202.0	218.2	240.7	239.1
Degree	22.2	21.9	32.1	33.1	32.7	30.2
Trade qualification or apprenticeship	} 143.2	} 165.0	} 160.5	} 174.4	} 28.3	} 22.2
Certificate or diploma						
Other	8.4	10.5	9.4	10.7	176.0	182.5
Without post-school qualifications(b)	541.5	556.5	547.4	543.6	540.5	564.1
Attended highest level of secondary school available	50.0	59.7	52.2	51.1	50.1	51.4
Did not attend highest level of secondary school available	483.0	492.1	489.8	487.4	480.2	505.1
55 and over	1,470.9	1,484.1	1,565.3	1,692.9	1,723.1	1,748.7
With post-school qualifications	234.5	244.1	259.9	290.4	348.8	355.4
Degree	24.3	27.8	30.5	37.6	30.2	30.6
Trade qualification or apprenticeship	} 199.7	} 206.8	} 218.5	} 235.1	} 51.1	} 61.8
Certificate or diploma						
Other	10.5	9.4	10.8	17.8	260.4	255.7
Without post-school qualifications(b)	1,236.4	1,240.0	1,305.3	1,402.5	1,374.3	1,393.4
Attended highest level of secondary school available	112.2	123.4	118.0	117.7	111.3	116.1
Did not attend highest level of secondary school available	1,105.2	1,099.6	1,166.5	1,265.2	1,237.9	1,249.9
All females	5,675.7	5,814.7	5,923.7	6,143.4	6,279.5	6,407.0
With post-school qualifications	1,513.7	1,640.0	1,667.0	1,774.6	1,904.3	1,969.1
Degree	249.2	270.4	311.4	338.6	319.4	335.5
Trade qualification or apprenticeship	} 1,208.3	} 1,308.1	} 1,278.8	} 1,346.9	} 184.2	} 183.1
Certificate or diploma						
Other	56.2	61.4	76.8	89.1	1,370.4	1,421.0
Without post-school qualifications(b)	3,951.3	3,947.7	4,021.8	4,121.6	4,102.9	4,137.9
Attended highest level of secondary school available	616.9	656.5	655.7	683.5	698.9	716.9
Did not attend highest level of secondary school available	3,301.5	3,261.1	3,335.0	3,407.4	3,351.4	3,370.1
Still at school	210.7	227.0	234.9	247.2	272.3	300.0

For footnotes see end of table.

**TABLE 2. ALL PERSONS : AGE AND EDUCATIONAL ATTAINMENT,
FEBRUARY 1983 TO FEBRUARY 1988—continued**
(' 000)

	1983	1984	1985	1986	1987(a)	1988(a)
PERSONS						
15-24	2,563.4	2,579.4	2,587.1	2,641.6	2,679.3	2,699.8
With post-school qualifications	569.7	563.4	561.0	586.5	550.6	568.7
Degree	78.6	77.3	84.3	78.5	86.0	78.8
Trade qualification or apprenticeship	469.6	464.1	447.6	475.6	185.4	191.2
Certificate or diploma						
Other	21.5	22.0	29.1	32.4	7.5	7.9
Without post-school qualifications(b)	1,580.1	1,549.6	1,557.0	1,557.2	1,571.4	1,544.5
Attended highest level of secondary school available	524.2	502.8	535.6	568.8	589.8	611.9
Did not attend highest level of secondary school available	1,055.8	1,044.5	1,020.6	986.9	977.3	928.6
Still at school	413.5	466.5	469.2	497.8	557.3	586.6
25-34	2,424.3	2,495.0	2,521.9	2,565.3	2,616.5	2,667.6
With post-school qualifications	1,100.6	1,186.6	1,181.6	1,217.6	1,273.2	1,340.9
Degree	263.6	296.5	298.5	312.4	305.6	337.5
Trade qualification or apprenticeship	814.0	866.1	845.2	870.0	405.2	419.6
Certificate or diploma						
Other	22.9	23.9	37.8	35.3	13.9	9.9
Without post-school qualifications(b)	1,323.8	1,308.5	1,340.3	1,347.7	1,343.2	1,326.7
Attended highest level of secondary school available	287.6	301.4	315.1	321.6	344.7	335.3
Did not attend highest level of secondary school available	1,032.6	1,002.0	1,021.1	1,022.6	988.1	980.8
35-44	2,052.8	2,060.0	2,142.3	2,229.4	2,313.5	2,397.7
With post-school qualifications	881.4	923.0	971.2	1,024.7	1,107.2	1,149.0
Degree	177.7	198.2	221.2	239.7	241.6	260.0
Trade qualification or apprenticeship	679.4	703.1	717.3	749.5	485.8	509.3
Certificate or diploma						
Other	24.3	21.7	32.7	35.5	8.0	8.2
Without post-school qualifications(b)	1,171.4	1,137.0	1,171.2	1,204.8	1,206.4	1,248.7
Attended highest level of secondary school available	162.1	166.5	176.4	181.1	185.5	207.7
Did not attend highest level of secondary school available	1,003.5	964.2	988.8	1,018.6	1,007.2	1,025.5
45-54	1,467.7	1,554.1	1,528.9	1,556.2	1,595.8	1,640.0
With post-school qualifications	499.1	574.3	556.9	605.1	663.8	674.2
Degree	78.1	84.7	103.3	112.6	102.7	111.2
Trade qualification or apprenticeship	406.3	472.2	436.6	474.4	279.9	263.6
Certificate or diploma						
Other	14.7	17.4	17.0	18.2	4.7	4.7
Without post-school qualifications(b)	968.6	979.8	972.0	951.1	932.0	965.8
Attended highest level of secondary school available	100.9	103.5	98.7	99.9	91.2	97.0
Did not attend highest level of secondary school available	854.3	866.9	864.0	842.2	825.2	851.4
55 and over	2,755.2	2,799.9	2,916.0	3,108.6	3,166.7	3,218.0
With post-school qualifications	652.1	689.8	704.9	779.5	932.5	952.0
Degree	94.8	106.7	109.2	121.7	115.3	115.3
Trade qualification or apprenticeship	540.5	568.5	576.0	631.8	409.4	429.6
Certificate or diploma						
Other	16.8	14.6	19.7	26.0	9.3	8.3
Without post-school qualifications(b)	2,103.0	2,110.0	2,211.0	2,329.0	2,234.2	2,266.0
Attended highest level of secondary school available	197.5	201.0	203.0	203.5	184.4	194.2
Did not attend highest level of secondary school available	1,875.2	1,883.0	1,976.8	2,096.6	2,010.3	2,028.7
All persons	11,263.4	11,488.4	11,696.1	12,101.1	12,371.7	12,623.2
With post-school qualifications	3,702.9	3,937.1	3,975.5	4,213.4	4,527.3	4,684.8
Degree	693.0	763.5	816.4	864.8	851.1	902.8
Trade qualification or apprenticeship	2,909.8	3,074.0	3,022.8	3,201.3	1,651.6	1,675.4
Certificate or diploma						
Other	100.2	99.6	136.3	147.3	43.4	39.0
Without post-school qualifications(b)	7,147.0	7,084.8	7,251.5	7,389.9	7,287.2	7,351.8
Attended highest level of secondary school available	1,272.3	1,275.1	1,328.8	1,374.8	1,395.6	1,446.1
Did not attend highest level of secondary school available	5,821.3	5,760.6	5,871.4	5,966.9	5,808.1	5,815.0
Still at school	413.5	466.5	469.2	497.8	557.3	586.6

(a) Prior to February 1987 the data now published in the Educational Attainment categories 'Trade qualifications or apprenticeship' and 'Certificate or diploma' was published as 'Trade, technical or other certificate'. See paragraph 14 of the Explanatory Notes, Appendix B. (b) Includes persons who never attended school and those for whom secondary school qualifications could not be determined.

TABLE 3. UNEMPLOYED PERSONS : UNEMPLOYMENT RATE, AVERAGE AND MEDIAN DURATION OF UNEMPLOYMENT AND EDUCATIONAL ATTAINMENT, FEBRUARY 1983 TO FEBRUARY 1988

	Educational attainment							
	With post-school qualifications			Without post-school qualifications				
	Degree	Trade qualification or apprenticeship	Certificate or diploma	Total(a)	Attended highest level of secondary school available	Did not attend highest level of secondary school available	Total(b)	Total(c)
MALES								
Unemployment rate—								
				—per cent—				
1983	3.6	7.2		6.5	10.8	12.8	12.4	10.0
1984	4.3	6.4		5.9	11.8	12.8	12.7	9.8
1985	2.8	5.2		4.7	10.7	12.0	11.7	8.7
1986	2.7	4.5		4.3	9.7	11.2	10.9	8.1
1987(d)	3.1	5.0	4.2	4.5	10.6	12.2	11.8	8.5
1988(d)	2.6	4.6	4.2	4.1	8.4	10.9	10.3	7.6
Average duration of unemployment—								
				—weeks—				
1983	20.2	23.3		23.4	24.8	37.7	35.2	31.2
1984	34.7	35.3		35.3	37.5	54.4	51.2	45.6
1985	30.6	42.9		40.3	32.7	63.5	57.4	51.9
1986	36.6	48.7		47.2	35.6	65.2	59.3	54.3
1987(d)	50.0	56.5	47.2	53.2	35.6	67.0	60.5	56.7
1988(d)	40.1	48.2	50.1	47.4	32.3	70.7	62.7	56.1
Median duration of unemployment—								
1983	11	12		12	12	19	17	14
1984	13	21		19	15	39	32	26
1985	12	15		14	12	29	26	22
1986	11	12		12	10	27	24	17
1987(d)	13	17	26	17	11	26	24	20
1988(d)	11	15	13	14	10	30	24	18
FEMALES								
Unemployment rate—								
				—per cent—				
1983	8.0	9.4		9.2	12.9	12.9	12.9	11.8
1984	7.1	9.2		8.8	11.0	12.8	12.4	11.3
1985	4.7	6.7		6.5	11.2	12.0	11.8	10.2
1986	5.8	7.1		7.2	11.4	11.2	11.3	10.0
1987(d)	4.6	6.1	7.3	6.8	11.8	11.1	11.3	9.9
1988(d)	5.4	7.6	7.4	7.1	11.0	9.3	9.8	9.1
Average duration of unemployment—								
				—weeks—				
1983	23.6	22.4		23.3	24.1	36.5	33.8	30.5
1984	11.7	26.6		25.0	32.9	45.9	43.3	36.4
1985	23.0	27.4		29.4	23.7	42.5	38.5	34.6
1986	12.1	25.8		23.8	21.6	34.5	31.6	28.3
1987(d)	19.9	33.2	23.2	23.2	25.6	44.5	39.8	33.2
1988(d)	11.1	47.5	28.5	28.5	22.5	38.3	34.5	30.9
Median duration of unemployment—								
1983	9	9		9	10	14	13	12
1984	8	9		9	12	18	16	13
1985	5	8		9	10	19	14	12
1986	5	7		7	8	11	10	9
1987(d)	11	11	8	8	11	15	13	10
1988(d)	5	27	8	8	8	15	12	9
PERSONS								
Unemployment rate—								
				—per cent—				
1983	5.0	7.9		7.4	11.6	12.8	12.6	10.7
1984	5.2	7.3		6.9	11.5	12.8	12.6	10.4
1985	3.4	5.8		5.4	10.9	12.0	11.7	9.3
1986	3.8	5.4		5.3	10.4	11.2	11.1	8.9
1987(d)	3.6	5.1	6.2	5.3	11.1	11.7	11.6	9.1
1988(d)	3.6	4.8	6.2	5.2	9.5	10.2	10.1	8.2
Average duration of unemployment—								
				—weeks—				
1983	22.0	23.0		23.4	24.5	37.2	34.6	30.9
1984	24.9	31.6		30.9	35.6	51.1	48.1	41.9
1985	27.0	36.6		35.7	29.0	55.0	49.7	44.6
1986	23.4	38.0		35.9	29.2	52.5	47.5	42.7
1987(d)	36.9	54.5	29.3	39.4	31.1	57.9	51.9	46.5
1988(d)	25.1	48.1	33.9	38.1	27.5	57.9	50.9	44.8
Median duration of unemployment—								
1983	9	10		11	11	17	16	13
1984	10	15		13	13	28	26	19
1985	9	13		12	10	26	20	16
1986	7	11		10	9	19	15	12
1987(d)	11	15	10	12	11	24	18	14
1988(d)	7	16	8	9	9	24	17	13

(a) Includes persons with other post-school qualifications. (b) Includes persons who never attended school and those for whom secondary school qualifications could not be determined. (c) Includes persons still at school. (d) Prior to February 1987 the data now published in the Educational Attainment categories 'Trade qualification or apprenticeship' and 'Certificate or diploma' was published as 'Trade, technical or other certificate'. See paragraph 14 of the Explanatory Notes, Appendix B.

TABLE 4. ALL PERSONS : EDUCATIONAL ATTAINMENT AND LABOUR FORCE STATUS, FEBRUARY 1988

Educational attainment	Employed			Unem- ployed	Labour force	Not in labour force	Total	Partici- pation rate	Unem- ployment rate
	Full-time	Part-time	Total						
- '000 -									
MALES									
With post-school qualifications	2,083.9	87.3	2,171.1	93.3	2,264.5	451.2	2,715.7	83.4	4.1
Degree	470.9	22.2	493.1	13.2	506.2	61.1	567.3	89.2	2.6
Trade qualification or apprenticeship	1,109.6	41.0	1,150.6	56.0	1,206.6	285.7	1,492.3	80.9	4.6
Certificate or diploma	497.6	23.0	520.6	22.8	543.4	103.3	646.7	84.0	4.2
Other	5.8	*	6.9	*	8.2	*	9.4	87.9	*
Without post-school qualifications(a)	1,973.3	147.0	2,120.3	242.5	2,362.8	851.2	3,214.0	73.5	10.3
Attended highest level of secondary school available	488.2	59.0	547.3	50.2	597.5	131.7	729.2	81.9	8.4
Did not attend highest level of secondary school available	1,465.8	85.6	1,551.4	189.6	1,741.0	703.9	2,444.9	71.2	10.9
Left at age-									
18 and over	24.8	*	26.5	*	30.5	7.5	38.1	80.2	*
16 or 17	547.5	30.0	577.6	74.4	651.9	102.0	753.9	86.5	11.4
14 or 15	756.9	43.9	800.7	96.7	897.4	424.0	1,321.4	67.9	10.8
13 and under	136.6	10.0	146.6	14.5	161.1	170.4	331.5	48.6	9.0
Never attended school	5.9	*	7.1	*	8.6	12.7	21.3	40.2	*
Still at school	*	47.7	50.0	18.8	68.8	217.7	286.5	24.0	27.4
Total	4,059.6	281.9	4,341.5	354.7	4,696.1	1,520.1	6,216.2	75.5	7.6
FEMALES									
With post-school qualifications	797.5	401.6	1,199.1	91.2	1,290.2	678.9	1,969.1	65.5	7.1
Degree	190.7	55.0	245.7	14.2	259.8	75.6	335.5	77.5	5.4
Trade qualification or apprenticeship	51.7	30.7	82.3	6.8	89.1	94.0	183.1	48.7	7.6
Certificate or diploma	548.1	310.5	858.6	68.2	926.9	494.1	1,421.0	65.2	7.4
Other	7.1	5.4	12.4	*	14.4	15.2	29.6	48.7	*
Without post-school qualifications(a)	995.0	612.4	1,607.5	174.9	1,782.4	2,355.4	4,137.9	43.1	9.8
Attended highest level of secondary school available	261.8	125.8	387.6	48.0	435.6	281.4	716.9	60.8	11.0
Did not attend highest level of secondary school available	725.2	480.1	1,205.2	124.3	1,329.5	2,040.6	3,370.1	39.5	9.3
Left at age-									
18 and over	13.7	*	17.7	*	19.4	15.9	35.3	55.0	*
16 or 17	317.9	170.9	488.9	52.9	541.7	416.1	957.9	56.6	9.8
14 or 15	347.4	276.3	623.7	64.9	688.6	1,276.1	1,964.7	35.0	9.4
13 and under	46.2	28.8	75.0	*	79.8	332.4	412.2	19.3	*
Never attended school	*	*	*	*	5.9	26.7	32.7	18.2	*
Still at school	*	70.3	71.1	22.0	93.1	206.9	300.0	31.0	23.7
Total	1,793.4	1,084.3	2,877.7	288.1	3,165.8	3,241.2	6,407.0	49.4	9.1
PERSONS									
With post-school qualifications	2,881.4	488.8	3,370.2	184.5	3,554.7	1,130.1	4,684.8	75.9	5.2
Degree	661.5	77.2	738.8	27.3	766.1	136.7	902.8	84.9	3.6
Trade qualification or apprenticeship	1,161.2	71.7	1,232.9	62.8	1,295.7	379.7	1,675.4	77.3	4.8
Certificate or diploma	1,045.7	333.5	1,379.2	91.1	1,470.3	597.4	2,067.7	71.1	6.2
Other	12.9	6.4	19.3	*	22.6	16.3	39.0	58.1	*
Without post-school qualifications(a)	2,968.4	759.4	3,727.8	417.5	4,145.3	3,206.6	7,351.8	56.4	10.1
Attended highest level of secondary school available	750.1	184.8	934.8	98.2	1,033.0	413.1	1,446.1	71.4	9.5
Did not attend highest level of secondary school available	2,191.0	565.6	2,756.6	313.9	3,070.5	2,744.5	5,815.0	52.8	10.2
Left at age-									
18 and over	38.4	5.7	44.1	5.8	49.9	23.4	73.4	68.0	11.6
16 or 17	865.5	201.0	1,066.4	127.2	1,193.7	518.1	1,711.8	69.7	10.7
14 or 15	1,104.2	320.2	1,424.4	161.6	1,586.0	1,700.1	3,286.1	48.3	10.2
13 and under	182.9	38.8	221.6	19.2	240.9	502.9	743.7	32.4	8.0
Never attended school	8.4	*	11.3	*	14.5	39.4	53.9	26.9	*
Still at school	*	117.9	121.1	40.8	161.9	424.6	586.6	27.6	25.2
Total	5,853.0	1,366.2	7,219.1	642.8	7,861.9	4,761.3	12,623.2	62.3	8.2

(a) Includes persons for whom secondary school qualifications could not be determined.

TABLE 5. ALL PERSONS : EDUCATIONAL ATTAINMENT AND FAMILY STATUS, FEBRUARY 1988
(*000)

Educational attainment	Family status								Family status not determined	Total
	Husband or wife		Member of a family				Total	Not a member of a family		
	With dependents present	Without dependents present	Not married family head	Full-time student aged 15-24(a)	Other child of family head	Other relative of family head				
MALES										
With post-school qualifications(b)	1,103.0	857.5	45.9	*	220.3	20.2	2,251.9	375.3	88.5	2,715.7
Degree	257.6	142.2	8.3	*	38.8	*	454.8	95.0	17.5	567.3
Trade qualification or apprenticeship	570.9	518.6	26.4	*	127.3	9.0	1,253.4	187.2	51.7	1,492.3
Certificate or diploma	271.5	194.5	10.9	*	52.7	5.9	536.0	91.5	19.2	646.7
Without post-school qualifications(c)	866.6	956.8	64.3	88.5	620.9	66.4	2,663.5	432.9	117.6	3,214.0
Attended highest level of secondary school available	165.3	129.7	12.4	73.2	193.1	13.5	587.2	115.9	26.1	729.2
Did not attend highest level of secondary school available	686.6	813.8	50.9	15.3	426.5	51.2	2,044.3	312.4	88.2	2,444.9
Left at age—										
16 and over	224.2	145.7	10.1	11.2	246.0	14.1	651.2	110.9	29.8	792.0
14 or 15	375.1	500.2	29.3	*	174.9	28.2	1,111.8	164.0	45.6	1,321.4
13 and under	87.3	168.0	11.5	*	5.6	8.9	281.3	37.5	12.8	331.5
Still at school	*	*	*	272.8	*	*	272.8	*	12.5	286.5
Total	1,969.6	1,814.3	110.2	366.2	841.2	86.6	5,188.1	809.4	218.6	6,216.2
FEMALES										
With post-school qualifications(b)	734.9	505.4	134.2	9.5	177.1	26.5	1,587.6	297.3	84.2	1,969.1
Degree	127.1	70.4	20.2	*	30.8	*	257.0	65.9	12.6	335.5
Trade qualification or apprenticeship	55.3	64.8	11.2	*	11.2	*	146.7	29.9	6.5	183.1
Certificate or diploma	542.0	362.5	99.5	5.0	133.0	17.9	1,160.0	196.8	64.2	1,421.0
Without post-school qualifications(c)	1,179.6	1,294.0	346.2	94.4	348.9	111.9	3,375.1	628.1	134.7	4,137.9
Attended highest level of secondary school available	185.8	150.9	39.7	77.5	125.4	12.1	591.5	98.8	26.7	716.9
Did not attend highest level of secondary school available	980.2	1,126.7	302.1	16.6	222.0	92.9	2,740.4	523.4	106.3	3,370.1
Left at age—										
16 and over	372.6	231.9	78.4	12.2	126.5	12.4	833.9	123.5	35.7	993.2
14 or 15	522.4	721.6	188.9	*	92.2	55.5	1,585.0	316.9	62.7	1,964.7
13 and under	85.2	173.2	34.8	*	*	24.9	321.4	82.9	7.8	412.2
Still at school	*	*	*	287.8	*	*	289.1	*	9.7	300.0
Total	1,914.5	1,799.5	480.8	391.6	527.0	138.3	5,251.8	926.6	228.6	6,407.0
PERSONS										
With post-school qualifications(b)	1,837.8	1,362.9	180.2	14.4	397.4	46.7	3,839.4	672.7	172.7	4,684.8
Degree	384.7	212.6	28.5	6.9	69.5	9.3	711.7	160.9	30.1	902.8
Trade qualification or apprenticeship	626.1	583.4	37.6	*	138.5	12.6	1,400.1	217.2	58.2	1,675.4
Certificate or diploma	813.6	557.1	110.4	5.5	185.7	23.8	1,696.0	288.3	83.4	2,067.7
Without post-school qualifications(c)	2,046.2	2,250.8	410.5	182.8	969.8	178.2	6,038.5	1,061.0	252.3	7,351.8
Attended highest level of secondary school available	351.1	280.6	52.1	150.8	318.5	25.6	1,178.6	214.7	52.7	1,446.1
Did not attend highest level of secondary school available	1,666.8	1,940.5	353.0	31.9	648.4	144.1	4,784.7	835.8	194.5	5,815.0
Left at age—										
16 and over	596.8	377.6	88.5	23.4	372.4	26.5	1,485.2	234.5	65.5	1,785.2
14 or 15	897.5	1,221.8	218.2	8.5	267.1	83.7	2,696.8	480.9	108.4	3,286.1
13 and under	172.5	341.2	46.3	*	8.9	33.9	602.8	120.4	20.6	743.7
Still at school	*	*	*	560.5	*	*	561.9	*	22.3	586.6
Total	3,884.1	3,613.8	591.1	757.8	1,368.3	224.9	10,439.9	1,736.0	447.3	12,623.2

(a) Excludes persons aged 20 to 24 attending school. (b) Includes persons with other post-school qualifications. (c) Includes persons who never attended school and those for whom secondary school qualifications could not be determined.

TABLE 6. PERSONS WITH POST-SCHOOL QUALIFICATIONS : MAIN FIELD OF STUDY, AGE AND LABOUR FORCE STATUS, FEBRUARY 1988

Main field of study	Age group				55 and over	Labour force		Not in labour force	Total	Participation rate
	15 - 24	25 - 34	35 - 44	45 - 54		Employed	Total			
	- '000 -									- per cent -
MALES										
Degree	36.6	193.3	171.7	80.9	84.8	493.1	506.2	61.1	567.3	89.2
Administration(a)	11.7	46.6	29.9	16.3	13.9	108.1	111.1	7.4	118.4	93.8
Law	*	11.5	12.2	*	5.3	28.0	28.3	*	32.6	86.7
Education	*	20.2	16.6	7.3	9.4	45.8	47.1	7.9	55.0	85.7
Medicine	*	10.6	13.7	11.3	12.0	46.2	46.7	*	49.9	93.6
Science, computing(b)	8.8	47.3	38.3	15.5	10.7	105.5	107.7	12.9	120.6	89.3
Engineering	5.0	23.9	29.4	13.0	17.1	73.3	74.9	13.5	88.4	84.7
Architecture	*	7.1	5.5	*	*	17.8	18.2	*	20.5	88.6
Social sciences(c)	5.0	22.6	22.0	9.1	10.1	57.9	61.1	7.7	68.8	88.8
Other	*	*	*	*	*	10.5	11.1	*	13.1	85.2
Trade qualification or apprenticeship	163.5	385.4	334.3	241.3	367.8	1,150.6	1,206.6	285.7	1,492.3	80.9
Metal	39.8	85.7	72.4	45.1	96.7	253.1	267.5	72.2	339.7	78.8
Service	*	*	*	*	5.9	16.4	17.5	*	21.9	79.9
Building	27.8	81.4	76.7	62.8	91.0	253.3	268.8	70.9	339.7	79.1
Electrical	23.5	58.0	52.8	34.2	36.6	169.4	175.4	29.7	205.0	85.5
Food and drink	12.1	24.8	20.4	14.4	19.4	69.5	73.4	17.5	90.9	80.8
Wood and furniture	6.1	14.5	11.3	10.1	17.2	46.0	47.2	12.0	59.2	79.7
Printing and allied	*	13.1	10.8	9.5	11.7	41.3	41.5	8.0	49.5	83.8
Automotive and mechanical	34.6	70.1	57.5	34.2	45.5	193.7	202.5	39.5	242.0	83.7
Footwear, clothing and textiles	*	*	*	7.3	11.7	16.7	17.4	8.7	26.0	66.7
Other	11.1	30.7	24.7	19.7	32.1	91.1	95.5	22.8	118.3	80.7
Certificate or diploma	62.6	156.6	172.0	112.4	143.1	520.6	543.4	103.3	646.7	84.0
Secretarial(d)	*	*	*	*	*	7.4	8.5	*	10.6	80.6
Health(e)	*	13.2	10.8	6.4	9.3	36.5	37.2	5.7	42.9	86.7
Engineering(f)	10.1	37.2	42.5	23.2	38.2	121.7	124.9	26.3	151.2	82.6
Education(g)	*	17.8	17.0	15.2	9.3	50.9	52.8	9.7	62.5	84.5
Business(h)	9.9	36.4	54.7	37.4	45.0	144.8	147.7	35.8	183.4	80.5
Science(i)	15.0	22.7	20.8	13.1	15.9	74.7	78.2	9.2	87.4	89.4
Social studies(j)	*	*	*	*	*	12.4	14.9	*	17.8	84.0
Other	15.3	22.3	20.3	14.0	18.9	72.2	79.3	11.6	90.9	87.2
Total(k)	265.9	738.6	679.4	435.2	596.6	2,171.1	2,264.5	451.2	2,715.7	83.4
FEMALES										
Degree	42.2	144.2	88.3	30.2	30.6	245.7	259.8	75.6	335.5	77.5
Administration(a)	5.7	17.6	6.9	*	*	26.0	27.5	7.3	34.7	79.1
Law	*	5.4	*	*	*	9.1	9.1	*	10.3	88.3
Education	5.4	42.4	26.2	9.9	9.5	65.7	71.1	22.3	93.4	76.1
Medicine	*	9.7	8.7	*	*	21.6	22.6	6.7	29.3	77.2
Science, computing(b)	10.2	23.5	11.8	*	*	36.9	38.3	11.6	49.9	76.7
Engineering	*	*	*	*	*	*	*	*	*	*
Architecture	*	*	*	*	*	*	*	*	*	*
Social sciences(c)	12.9	38.4	30.4	9.3	10.9	75.1	78.7	23.3	102.0	77.2
Other	*	5.0	*	*	*	7.1	8.5	*	10.1	84.4
Trade qualification or apprenticeship	27.7	34.2	37.2	22.2	61.8	82.3	89.1	94.0	183.1	48.7
Metal	*	*	*	*	*	*	*	*	*	*
Service	13.8	21.4	25.1	6.7	15.4	46.2	48.7	33.7	82.4	59.1
Building	*	*	*	*	*	*	*	*	*	*
Electrical	*	*	*	*	*	*	*	*	*	*
Food and drink	5.7	*	*	*	*	9.7	11.4	*	16.1	71.0
Wood and furniture	*	*	*	*	*	*	*	*	*	*
Printing and allied	*	*	*	*	*	*	*	*	6.3	*
Automotive and mechanical	*	*	*	*	*	*	*	*	*	*
Footwear, clothing and textiles	*	*	6.1	11.0	37.9	13.1	14.6	44.9	59.5	24.6
Other	*	*	*	*	*	7.1	7.4	6.8	14.2	51.9
Certificate or diploma	228.2	417.3	337.3	182.5	255.7	858.6	926.9	494.1	1,421.0	65.2
Secretarial(d)	114.7	156.1	121.5	60.2	86.6	327.0	357.5	181.5	539.0	66.3
Health(e)	41.8	119.9	93.7	54.3	75.8	234.6	245.9	139.6	385.5	63.8
Engineering(f)	*	*	*	*	*	6.3	6.7	*	10.4	65.0
Education(g)	19.8	55.9	57.9	30.5	44.5	121.5	132.0	76.5	208.5	63.3
Business(h)	12.3	28.2	24.5	14.4	16.0	62.7	67.9	27.6	95.5	71.1
Science(i)	*	10.5	*	*	*	16.7	16.8	6.2	23.0	73.2
Social studies(j)	11.6	18.6	14.8	12.8	17.0	40.3	43.7	31.2	74.9	58.4
Other	20.7	25.1	17.9	7.4	13.1	49.5	56.2	28.0	84.2	66.8
Total(k)	302.8	602.3	469.6	239.1	355.4	1,199.1	1,290.2	678.9	1,969.1	65.5

For footnotes see end of table.

TABLE 6. PERSONS WITH POST-SCHOOL QUALIFICATIONS : MAIN FIELD OF STUDY, AGE AND LABOUR FORCE STATUS, FEBRUARY 1988 --continued

Main field of study	Age group					Labour force		Not in labour force	Total	Participation rate
	15 - 24	25 - 34	35 - 44	45 - 54	55 and over	Employed	Total			
- '000 -										
PERSONS										
-per cent-										
Degree	78.8	337.5	260.0	111.2	115.3	738.8	766.1	136.7	902.8	84.9
Administration(a)	17.4	64.2	36.8	19.7	15.1	134.1	138.5	14.6	153.2	90.4
Law	*	16.8	14.1	*	6.0	37.1	37.4	5.5	42.9	87.1
Education	7.0	62.5	42.7	17.2	18.9	111.5	118.2	30.1	148.3	79.7
Medicine	5.9	20.3	22.4	14.1	16.4	67.9	69.3	9.8	79.2	87.6
Science, computing(b)	19.0	70.8	50.1	18.1	12.4	142.4	146.0	24.5	170.5	85.6
Engineering	5.7	25.2	30.1	13.4	17.4	75.5	77.1	14.8	91.8	83.9
Architecture	*	8.0	6.0	*	*	19.7	20.2	*	22.9	88.0
Social sciences(c)	17.8	61.0	52.4	18.5	21.0	133.0	139.7	31.0	170.7	81.9
Other	*	8.6	5.3	*	*	17.7	19.7	*	23.2	84.9
Trade qualification or apprenticeship	191.2	419.6	371.5	263.6	429.6	1,232.9	1,295.7	379.7	1,675.4	77.3
Metal	39.8	86.7	72.4	45.1	97.0	253.8	268.3	72.7	341.1	78.7
Service	16.4	26.3	29.5	10.7	21.3	62.6	66.1	38.1	104.2	63.4
Building	28.1	81.4	77.0	63.5	91.0	254.6	270.0	70.9	340.9	79.2
Electrical	23.6	58.4	53.0	34.2	37.1	170.1	176.1	30.2	206.3	85.3
Food and drink	17.8	29.2	22.6	14.9	22.5	79.2	84.9	22.2	107.0	79.3
Wood and furniture	6.1	14.5	11.3	10.1	17.2	46.0	47.2	12.0	59.2	79.7
Printing and allied	6.2	14.5	11.8	11.2	12.2	44.6	45.4	10.4	55.8	81.3
Automotive and mechanical	34.6	70.1	57.5	34.6	45.9	194.0	202.9	39.9	242.8	83.6
Footwear, clothing and textiles	*	*	9.4	18.3	49.6	29.9	32.0	53.6	85.6	37.4
Other	15.1	33.8	26.9	20.9	35.8	98.3	102.9	29.7	132.5	77.6
Certificate or diploma	290.8	573.9	509.3	294.9	398.8	1,379.2	1,470.3	597.4	2,067.7	71.1
Secretarial(d)	117.9	158.3	122.5	60.9	89.9	334.4	366.1	183.6	549.6	66.6
Health(e)	44.9	133.1	104.5	60.7	85.1	271.1	283.1	145.3	428.4	66.1
Engineering(f)	12.7	40.1	45.2	23.9	39.6	128.0	131.6	29.9	161.6	81.5
Education(g)	23.0	73.7	74.9	45.7	53.7	172.4	184.8	86.2	271.0	68.2
Business(h)	22.2	64.7	79.2	51.8	61.0	207.4	215.6	63.4	278.9	77.3
Science(i)	19.6	33.2	25.0	15.3	17.3	91.4	95.0	15.4	110.4	86.1
Social studies(j)	14.5	23.4	19.7	15.1	20.1	52.8	58.6	34.0	92.6	63.3
Other	36.0	47.4	38.3	21.4	32.0	121.7	135.5	39.6	175.1	77.4
Total(k)	568.7	1,340.9	1,149.0	674.2	952.0	3,370.2	3,554.7	1,130.1	4,684.8	75.9

(a) Includes business studies and commerce. (b) Includes mathematics, veterinary and agricultural science. (c) Includes arts and humanities. (d) Includes typing and data processing. (e) Includes nursing, para-medical and other health. (f) Includes communication, transport and architecture. (g) Includes teacher training. (h) Includes commerce and administration. (i) Includes computing and agriculture. (j) Includes arts and crafts. (k) Includes persons with other post- school qualifications.

TABLE 7. EMPLOYED PERSONS : INDUSTRY AND EDUCATIONAL ATTAINMENT, FEBRUARY 1988
(*000)

Industry	Educational attainment										
	With post-school qualifications				Without post-school qualifications						
	Degree	Trade qualification or apprenticeship	Certificate or diploma	Total(a)	Attended highest level of secondary school available	Did not attend highest level of secondary school available and left at age—	16 and over	14 or 15	13 and under	Total(b)	Total(c)
MALES											
Agriculture, forestry, fishing and hunting	7.6	33.9	34.1	76.7	35.0	43.9	109.5	26.9	217.7	296.8	
Mining	11.2	30.4	8.8	50.5	6.6	10.2	23.6	*	42.2	92.7	
Manufacturing	48.7	309.5	71.6	430.7	81.0	130.9	168.3	39.1	422.2	856.4	
Electricity, gas and water	9.6	43.1	20.5	73.2	8.1	14.2	21.6	5.0	50.0	123.2	
Construction	15.3	222.2	26.8	265.4	32.9	53.8	66.1	16.6	170.8	436.9	
Wholesale and retail trade	41.0	235.6	67.2	344.9	123.9	151.9	143.5	17.1	439.0	820.0	
Transport and storage	9.8	73.4	35.2	118.7	41.3	49.3	92.4	14.5	199.3	318.7	
Communication	9.6	26.1	13.5	49.4	15.7	13.8	14.5	*	49.6	99.1	
Finance, property and business services	110.5	41.3	82.5	235.3	86.3	44.2	37.5	*	174.0	410.8	
Public administration and defence	51.0	29.3	31.6	112.0	35.6	28.2	37.8	5.8	109.1	221.1	
Community services	163.5	57.7	99.0	320.9	33.2	28.3	38.8	5.4	108.4	431.0	
Recreation, personal and other services	15.3	48.1	29.9	93.4	47.7	35.2	47.1	5.9	138.1	234.8	
Total	493.1	1,150.6	520.6	2,171.1	547.3	604.0	800.7	146.6	2,120.3	4,341.5	
FEMALES											
Agriculture, forestry, fishing and hunting	5.3	*	30.7	39.9	11.8	25.4	41.0	6.6	86.2	130.1	
Mining	*	*	*	*	*	*	*	*	*	9.2	
Manufacturing	10.8	9.2	65.7	87.5	40.0	65.9	99.4	29.5	235.6	325.3	
Electricity, gas and water	*	*	*	5.1	*	*	*	*	11.2	16.3	
Construction	*	*	18.6	23.6	6.7	16.1	18.3	*	42.9	66.5	
Wholesale and retail trade	20.7	17.2	127.5	170.4	104.0	143.6	175.1	10.5	436.5	662.3	
Transport and storage	*	*	21.5	28.8	14.1	17.7	15.6	*	47.9	77.5	
Communication	*	*	9.0	11.1	7.0	7.9	8.9	*	25.5	36.7	
Finance, property and business services	31.0	*	118.8	153.6	73.3	73.4	59.9	*	212.0	366.7	
Public administration and defence	18.4	*	36.4	55.8	24.2	17.7	19.3	*	64.6	120.4	
Community services	139.5	10.1	363.9	514.5	63.0	78.2	107.3	13.0	263.9	780.0	
Recreation, personal and other services	11.7	32.6	58.2	104.0	39.3	54.8	74.2	7.1	176.7	286.7	
Total	245.7	82.3	858.6	1,199.1	387.6	506.5	623.7	75.0	1,607.5	2,877.7	
PERSONS											
Agriculture, forestry, fishing and hunting	13.0	36.7	64.8	116.7	46.8	69.2	150.5	33.5	303.9	426.9	
Mining	11.2	30.6	13.3	55.3	7.9	11.5	25.4	*	46.6	101.9	
Manufacturing	59.5	318.7	137.3	518.2	121.0	196.8	267.7	68.6	657.8	1,181.7	
Electricity, gas and water	10.1	43.8	24.4	78.3	11.0	18.9	24.5	5.3	61.2	139.5	
Construction	16.7	225.5	45.4	289.0	39.6	69.9	84.4	18.1	213.7	503.4	
Wholesale and retail trade	61.7	252.8	194.7	515.3	227.9	295.5	318.7	27.6	875.5	1,482.3	
Transport and storage	14.7	75.2	56.7	147.5	55.4	67.0	108.0	14.6	247.2	396.2	
Communication	11.1	26.5	22.4	60.5	22.7	21.7	23.4	*	75.1	135.7	
Finance, property and business services	141.5	44.5	201.3	388.9	159.6	117.6	97.4	8.9	386.0	777.5	
Public administration and defence	69.4	30.0	68.0	167.8	59.8	45.9	57.1	7.3	173.8	341.5	
Community services	303.0	67.8	462.9	835.4	96.2	106.4	146.1	18.4	372.3	1,211.0	
Recreation, personal and other services	27.0	80.7	88.1	197.4	87.0	90.0	121.3	13.0	314.8	521.6	
Total	738.8	1,232.9	1,379.2	3,370.2	934.8	1,110.5	1,424.4	221.6	3,727.8	7,219.1	

(a) Includes persons with other post-school qualifications. (b) Includes persons who never attended school and those for whom secondary school qualifications could not be determined. (c) Includes persons still at school.

TABLE 8. EMPLOYED PERSONS : EDUCATIONAL ATTAINMENT AND OCCUPATION, FEBRUARY 1988 ('000)

Educational attainment	Occupation								Total
	Managers and administrators	Professionals	Para-professionals	Tradespersons	Clerks	Salespersons and personal service workers	Plant and machine operators, and drivers	Labourers and related workers	
MALES									
With post-school qualifications(a)	286.3	488.3	161.2	676.5	95.6	142.1	143.4	177.8	2,171.1
Degree	75.5	330.6	14.9	9.2	24.4	25.0	*	8.5	493.1
Trade qualification or apprenticeship	110.5	30.6	67.7	621.8	26.4	62.6	104.4	126.5	1,150.6
Certificate or diploma	99.7	127.0	78.5	44.6	43.4	53.6	32.9	40.7	520.6
Without post-school qualifications(b)	325.2	61.0	76.1	347.2	221.2	226.6	332.5	530.6	2,120.3
Attended highest level of secondary school available	84.7	37.4	33.8	59.3	108.7	89.0	44.0	90.4	547.3
Did not attend highest level of secondary school available	234.5	22.0	40.9	286.4	110.8	136.0	287.6	433.1	1,551.4
Left at age—									
16 and over	77.9	11.4	21.4	139.0	59.3	69.3	80.5	145.2	604.0
14 or 15	126.5	9.8	19.1	121.0	50.0	62.9	175.2	236.3	800.7
13 and under	30.2	*	*	26.3	*	*	32.0	51.6	146.6
Still at school	*	*	*	*	*	16.2	*	30.5	50.0
Total	612.2	549.3	237.3	1,023.8	318.3	385.0	476.8	738.8	4,341.5
FEMALES									
With post-school qualifications(a)	82.5	298.4	145.6	46.2	377.8	173.3	14.6	60.6	1,199.1
Degree	18.4	167.6	9.3	*	30.0	13.3	*	5.0	245.7
Trade qualification or apprenticeship	6.1	*	*	29.9	15.2	15.1	*	9.7	82.3
Certificate or diploma	56.2	127.6	135.4	14.2	330.1	140.6	11.2	43.3	858.6
Without post-school qualifications(b)	114.4	32.5	28.1	63.1	564.7	396.4	80.0	328.3	1,607.5
Attended highest level of secondary school available	21.5	16.1	15.3	10.5	162.6	111.8	9.3	40.4	387.6
Did not attend highest level of secondary school available	90.7	16.4	12.1	52.2	394.8	282.6	70.3	286.0	1,205.2
Left at age—									
16 and over	36.7	7.5	5.6	21.8	202.5	133.5	22.5	76.4	506.5
14 or 15	46.2	8.1	6.5	26.7	186.5	143.1	32.6	173.9	623.7
13 and under	7.7	*	*	*	5.8	6.0	15.3	35.8	75.0
Still at school	*	*	*	*	*	56.4	*	11.0	71.1
Total	196.9	331.2	173.8	110.0	945.3	626.0	94.6	399.9	2,877.7
PERSONS									
With post-school qualifications(a)	368.8	786.7	306.8	722.7	473.4	315.4	158.1	238.4	3,370.2
Degree	93.9	498.2	24.2	10.5	54.4	38.4	5.6	13.6	738.8
Trade qualification or apprenticeship	116.6	33.3	68.7	651.7	41.7	77.8	107.0	136.2	1,232.9
Certificate or diploma	155.9	254.7	213.9	58.8	373.5	194.2	44.1	84.0	1,379.2
Without post-school qualifications(b)	439.6	93.5	104.2	410.3	785.9	622.9	412.5	858.9	3,727.8
Attended highest level of secondary school available	106.2	53.5	49.1	69.8	271.4	200.8	53.3	130.7	934.8
Did not attend highest level of secondary school available	325.2	38.4	53.1	338.6	505.6	418.6	358.0	719.2	2,756.6
Left at age—									
16 and over	114.6	18.9	27.0	160.9	261.8	202.8	102.9	221.6	1,110.5
14 or 15	172.7	18.0	25.6	147.7	236.5	206.0	207.8	410.2	1,424.4
13 and under	37.9	*	*	30.0	7.4	9.7	47.3	87.4	221.6
Still at school	*	*	*	*	*	72.6	*	41.5	121.1
Total	809.1	880.5	411.1	1,133.8	1,263.5	1,010.9	571.4	1,138.7	7,219.1

(a) Includes persons with other post-school qualifications. (b) Includes persons who never attended school and those for whom secondary school qualifications could not be determined.

TABLE 9. EMPLOYED PERSONS : EDUCATIONAL ATTAINMENT AND AGE , FEBRUARY 1988
('000)

Educational attainment	Age group						Total	-per cent-
	15 - 19	20 - 24	25 - 34	35 - 44	45 - 54	55 and over		
	--'000--							
MALES								
With post-school qualifications(a)	18.4	220.1	689.4	634.1	383.9	225.3	2,171.1	50.0
Degree	*	31.1	182.1	161.4	76.3	42.1	493.1	11.4
Trade qualification or apprenticeship	10.7	140.8	359.3	308.2	203.8	127.8	1,150.6	26.5
Certificate or diploma	6.6	46.8	145.5	163.1	103.2	55.4	520.6	12.0
Without post-school qualifications(b)	280.4	311.1	498.4	458.6	315.9	256.0	2,120.3	48.8
Attended highest level of secondary school available	89.4	139.0	158.4	93.6	39.9	26.9	547.3	12.6
Did not attend highest level of secondary school available	190.6	171.9	336.4	359.2	269.9	223.4	1,551.4	35.7
Left at age--								
16 and over	120.1	111.7	171.6	121.9	50.0	28.7	604.0	13.9
14 or 15	70.0	58.9	154.7	200.6	177.8	138.7	800.7	18.4
13 and under	*	*	10.0	36.6	42.1	56.0	146.6	3.4
Still at school	50.0	*	50.0	1.2
Total	348.7	531.2	1,187.7	1,092.7	699.8	481.4	4,341.5	100.0
FEMALES								
With post-school qualifications(a)	41.1	198.1	401.5	331.6	163.0	63.8	1,199.1	41.7
Degree	*	33.8	109.3	68.2	25.6	8.7	245.7	8.5
Trade qualification or apprenticeship	*	16.2	21.1	23.1	10.9	7.2	82.3	2.9
Certificate or diploma	36.9	145.6	267.6	236.1	124.8	47.7	858.6	29.8
Without post-school qualifications(b)	205.0	257.3	360.2	409.0	261.8	114.2	1,607.5	55.9
Attended highest level of secondary school available	86.0	109.4	90.1	60.6	28.8	12.7	387.6	13.5
Did not attend highest level of secondary school available	118.8	147.0	267.5	343.8	229.6	98.6	1,205.2	41.9
Left at age--								
16 and over	70.9	102.7	147.2	114.4	51.7	19.5	506.5	17.6
14 or 15	47.8	43.3	114.7	202.2	149.4	66.2	623.7	21.7
13 and under	*	*	5.6	27.2	28.5	12.8	75.0	2.6
Still at school	71.1	*	71.1	2.5
Total	317.2	455.4	761.7	740.6	424.8	177.9	2,877.7	100.0
PERSONS								
With post-school qualifications(a)	59.5	418.2	1,090.9	965.6	546.9	289.1	3,370.2	46.7
Degree	*	64.9	291.4	229.7	101.9	50.8	738.8	10.2
Trade qualification or apprenticeship	14.6	157.0	380.4	331.3	214.6	135.0	1,232.9	17.1
Certificate or diploma	43.5	192.4	413.1	399.1	228.0	103.1	1,379.2	19.1
Without post-school qualifications(b)	485.4	568.4	858.6	867.7	577.7	370.2	3,727.8	51.6
Attended highest level of secondary school available	175.4	248.4	248.5	154.2	68.7	39.6	934.8	12.9
Did not attend highest level of secondary school available	309.4	318.9	603.8	703.0	499.5	322.0	2,756.6	38.2
Left at age--								
16 and over	191.1	214.4	318.8	236.3	101.7	48.3	1,110.5	15.4
14 or 15	117.8	102.2	269.4	402.9	327.2	204.9	1,424.4	19.7
13 and under	*	*	15.6	63.8	70.6	68.8	221.6	3.1
Still at school	121.1	*	121.1	1.7
Total	665.9	986.6	1,949.4	1,833.3	1,124.6	659.3	7,219.1	100.0

(a) Includes persons with other post-school qualifications. (b) Includes persons who never attended school and those for whom secondary school qualifications could not be determined.

TABLE 10. UNEMPLOYED PERSONS : UNEMPLOYMENT RATE AND UNEMPLOYMENT/POPULATION RATIO BY EDUCATIONAL ATTAINMENT AND AGE, FEBRUARY 1988

Educational attainment	Age group						Total
	15 - 19	20 - 24	25 - 34	35 - 44	45 - 54	55 and over	
UNEMPLOYED PERSONS ('000)							
With post-school qualifications(a)	12.6	32.1	59.1	41.2	22.4	17.1	184.5
Degree	*	*	13.3	5.2	*	*	27.3
Trade qualification or apprenticeship	*	9.8	17.0	12.6	10.3	11.4	62.8
Certificate or diploma	10.3	16.8	27.5	22.7	9.4	*	91.1
Without post-school qualifications(b)	121.5	91.6	89.8	60.2	32.3	22.0	417.5
Attended highest level of secondary school available	41.6	26.6	16.6	8.6	*	*	98.2
Did not attend highest level of secondary school available	79.6	64.7	72.2	50.5	28.2	18.8	313.9
Left at age—							
16 and over	40.2	39.8	27.5	18.2	*	*	133.0
14 or 15	38.5	24.1	41.6	27.5	18.1	11.8	161.6
13 and under	*	*	*	*	5.4	*	19.2
Still at school	40.4	*	40.8
Total	174.5	124.1	148.9	101.4	54.7	39.1	642.8
UNEMPLOYMENT RATE (per cent)							
With post-school qualifications(a)	17.5	7.1	5.1	4.1	3.9	5.6	5.2
Degree	*	*	4.4	2.2	*	*	3.6
Trade qualification or apprenticeship	*	5.9	4.3	3.7	4.6	7.8	4.8
Certificate or diploma	19.2	8.0	6.2	5.4	3.9	*	6.2
Without post-school qualifications(b)	20.0	13.9	9.5	6.5	5.3	5.6	10.1
Attended highest level of secondary school available	19.2	9.7	6.2	5.3	*	*	9.5
Did not attend highest level of secondary school available	20.5	16.9	10.7	6.7	5.3	5.5	10.2
Left at age—							
16 and over	17.4	15.7	7.9	7.1	*	*	10.7
14 or 15	24.6	19.1	13.4	6.4	5.2	5.5	10.2
13 and under	*	*	*	*	7.1	*	8.0
Still at school	25.0	*	25.2
Total	20.8	11.2	7.1	5.2	4.6	5.6	8.2
UNEMPLOYMENT/POPULATION RATIO (per cent)							
With post-school qualifications(a)	16.3	6.5	4.4	3.6	3.3	1.8	3.9
Degree	*	*	3.9	2.0	*	*	3.0
Trade qualification or apprenticeship	*	5.6	4.1	3.4	3.9	2.7	3.7
Certificate or diploma	17.5	7.2	4.8	4.5	3.2	*	4.4
Without post-school qualifications(b)	16.7	11.2	6.8	4.8	3.3	1.0	5.7
Attended highest level of secondary school available	14.8	8.0	4.9	4.2	*	*	6.8
Did not attend highest level of secondary school available	17.8	13.4	7.4	4.9	3.3	0.9	5.4
Left at age—							
16 and over	15.5	12.8	5.8	5.5	*	*	7.5
14 or 15	20.8	14.5	8.9	4.6	3.3	0.9	4.9
13 and under	*	*	*	*	3.9	*	2.6
Still at school	6.9	*	7.0
Total	12.5	9.5	5.6	4.2	3.3	1.2	5.1

(a) Includes persons with other post-school qualifications. (b) Includes persons who never attended school and those for whom secondary school qualifications could not be determined.

TABLE 11. UNEMPLOYED PERSONS : EDUCATIONAL ATTAINMENT AND AGE, FEBRUARY 1988

Educational attainment	Age group						Total	-per cent-
	15 - 19	20 - 24	25 - 34	35 - 44	45 - 54	55 and over		
	-'000-							
MALES								
With post-school qualifications(a)	*	15.8	28.1	18.7	13.4	14.3	93.3	26.3
Degree	*	*	5.3	*	*	*	13.2	3.7
Trade qualification or apprenticeship	*	8.5	15.4	11.2	9.5	10.8	56.0	15.8
Certificate or diploma	*	*	6.7	*	*	*	22.8	6.4
Without post-school qualifications(b)	66.1	56.7	50.8	30.0	20.0	18.9	242.5	68.4
Attended highest level of secondary school available	19.0	14.4	9.1	*	*	*	50.2	14.2
Did not attend highest level of secondary school available	47.1	42.1	41.1	24.7	18.1	16.5	189.6	53.5
Left at age-								
16 and over	23.5	25.4	14.4	9.1	*	*	78.4	22.1
14 or 15	22.8	16.4	24.3	12.6	10.9	9.7	96.7	27.3
13 and under	*	*	*	*	*	*	14.5	4.1
Still at school	18.8	*	18.8	5.3
Total	87.9	72.5	79.0	48.7	33.4	33.1	354.7	100.0
FEMALES								
With post-school qualifications(a)	9.6	16.3	30.9	22.5	9.0	*	91.2	31.6
Degree	*	*	8.0	*	*	*	14.2	4.9
Trade qualification or apprenticeship	*	*	*	*	*	*	6.8	2.4
Certificate or diploma	7.9	12.7	20.8	18.5	6.6	*	68.2	23.7
Without post-school qualifications(b)	55.5	34.9	39.0	30.2	12.3	*	174.9	60.7
Attended highest level of secondary school available	22.7	12.1	7.4	*	*	*	48.0	16.7
Did not attend highest level of secondary school available	32.4	22.6	31.0	25.8	10.1	*	124.3	43.1
Left at age-								
16 and over	16.7	14.4	13.1	9.1	*	*	54.6	19.0
14 or 15	15.8	7.7	17.3	14.9	7.1	*	64.9	22.5
13 and under	*	*	*	*	*	*	*	*
Still at school	21.5	*	22.0	7.6
Total	86.6	51.7	69.9	52.7	21.3	6.0	288.1	100.0
PERSONS								
With post-school qualifications(a)	12.6	32.1	59.1	41.2	22.4	17.1	184.5	28.7
Degree	*	*	13.3	5.2	*	*	27.3	4.2
Trade qualification or apprenticeship	*	9.8	17.0	12.6	10.3	11.4	62.8	9.8
Certificate or diploma	10.3	16.8	27.5	22.7	9.4	*	91.1	14.2
Without post-school qualifications(b)	121.5	91.6	89.8	60.2	32.3	22.0	417.5	64.9
Attended highest level of secondary school available	41.6	26.6	16.6	8.6	*	*	98.2	15.3
Did not attend highest level of secondary school available	79.6	64.7	72.2	50.5	28.2	18.8	313.9	48.8
Left at age-								
16 and over	40.2	39.8	27.5	18.2	*	*	133.0	20.7
14 or 15	38.5	24.1	41.6	27.5	18.1	11.8	161.6	25.1
13 and under	*	*	*	*	5.4	*	19.2	3.0
Still at school	40.4	*	40.8	6.4
Total	174.5	124.1	148.9	101.4	54.7	39.1	642.8	100.0

(a) Includes persons with other post-school qualifications. (b) Includes persons who never attended school and those for whom secondary school qualifications could not be determined.

TABLE 12. UNEMPLOYED PERSONS : EDUCATIONAL ATTAINMENT AND DURATION OF CURRENT PERIOD OF UNEMPLOYMENT, FEBRUARY 1988

Educational attainment	Duration of current period of unemployment (weeks)						Total	Average duration	Median duration	
	1 and under 4	4 and under 8	8 and under 13	13 and under 26	26 and under 52	52 and under 104				104 and over
MALES										
- '000-										
With post-school qualifications(a)	19.2	16.0	10.1	12.4	11.7	9.2	14.7	93.3	47.4	14
Degree	*	*	*	*	*	*	*	13.2	40.1	11
Trade qualification or apprenticeship	12.1	10.0	5.1	6.8	7.4	5.4	9.2	56.0	48.2	15
Certificate or diploma	*	*	*	*	*	*	*	22.8	50.1	13
Without post-school qualifications(b)	33.3	28.1	34.0	28.2	29.6	37.2	52.0	242.5	62.7	24
Attended highest level of secondary school available	11.4	9.6	9.2	6.4	*	5.7	*	50.2	32.3	10
Did not attend highest level of secondary school available	21.2	18.5	24.8	21.7	25.9	30.8	46.7	189.6	70.7	30
Left at age-										
16 and over	10.4	7.8	13.4	9.7	10.4	12.0	14.7	78.4	57.3	22
14 or 15	9.2	9.8	9.1	10.8	13.7	17.7	26.5	96.7	77.4	39
13 and under	*	*	*	*	*	*	5.6	14.5	98.0	40
Still at school	*	*	*	*	*	*	*	18.8	14.2	9
Total	56.6	48.7	47.0	44.5	42.9	48.2	66.7	354.7	56.1	18
-per cent-										
Proportion of unemployed persons	16.0	13.7	13.2	12.6	12.1	13.6	18.8	100.0
FEMALES										
- '000-										
With post-school qualifications(a)	27.7	16.5	13.5	9.4	6.3	10.9	6.9	91.2	28.5	8
Degree	6.0	*	*	*	*	*	*	14.2	11.1	5
Trade qualification or apprenticeship	*	*	*	*	*	*	*	6.8	47.5	27
Certificate or diploma	20.2	12.9	11.0	7.2	*	8.4	5.0	68.2	28.5	8
Without post-school qualifications(b)	42.1	26.2	23.8	21.7	20.6	22.8	17.8	174.9	34.5	12
Attended highest level of secondary school available	12.4	9.8	11.2	6.0	*	*	*	48.0	22.5	8
Did not attend highest level of secondary school available	29.6	16.4	12.5	15.6	16.2	18.4	15.6	124.3	38.3	15
Left at age-										
16 and over	13.6	8.4	5.8	7.0	7.8	8.7	*	54.6	28.5	12
14 or 15	15.6	7.4	6.1	8.1	8.0	8.6	11.1	64.9	44.9	17
13 and under	*	*	*	*	*	*	*	*	*	*
Still at school	8.0	5.4	*	*	*	*	*	22.0	11.7	6
Total	77.8	48.0	41.1	33.3	27.7	35.6	24.6	288.1	30.9	9
-per cent-										
Proportion of unemployed persons	27.0	16.7	14.2	11.6	9.6	12.4	8.6	100.0
PERSONS										
- '000-										
With post-school qualifications(a)	47.0	32.5	23.6	21.8	18.0	20.1	21.5	184.5	38.1	9
Degree	9.0	*	*	*	*	*	*	27.3	25.1	7
Trade qualification or apprenticeship	13.5	10.9	5.5	7.2	8.3	6.8	10.6	62.8	48.1	16
Certificate or diploma	24.3	16.3	14.5	10.8	5.2	10.7	9.1	91.1	33.9	8
Without post-school qualifications(b)	75.4	54.3	57.8	49.9	50.3	60.1	69.8	417.5	50.9	17
Attended highest level of secondary school available	23.8	19.3	20.4	12.4	6.9	9.4	6.0	98.2	27.5	9
Did not attend highest level of secondary school available	50.8	34.9	37.3	37.3	42.1	49.2	62.3	313.9	57.9	24
Left at age-										
16 and over	24.0	16.2	19.2	16.7	18.2	20.7	18.1	133.0	45.5	17
14 or 15	24.8	17.1	15.2	18.9	21.7	26.3	37.6	161.6	64.3	27
13 and under	*	*	*	*	*	*	6.6	19.2	89.0	40
Still at school	12.1	10.0	6.6	6.1	*	*	*	40.8	12.8	7
Total	134.4	96.7	88.0	77.8	70.6	83.8	91.3	642.8	44.8	13
-per cent-										
Proportion of unemployed persons	20.9	15.0	13.7	12.1	11.0	13.0	14.2	100.0

(a) Includes persons with other post-school qualifications. (b) Includes persons who never attended school and those for whom secondary school qualifications could not be determined.

TABLE 13. PERSONS NOT IN THE LABOUR FORCE : WHETHER IN THE LABOUR FORCE IN THE LAST TWELVE MONTHS, EDUCATIONAL ATTAINMENT AND MAIN ACTIVITY WHILE NOT IN THE LABOUR FORCE, FEBRUARY 1988 ('000)

Educational attainment	Main activity while not in the labour force									Total(a)
	Kept house	Attended an educational institution	Retired or voluntarily inactive	Unpaid leave	Own illness, injury	Own disability or handicap	Worked in an unpaid voluntary job	Travelled, moved house, holiday	Other	
IN THE LABOUR FORCE IN THE LAST TWELVE MONTHS										
With post-school qualifications(b)	117.0	17.2	36.0	*	15.7	*	*	13.7	8.3	224.9
Degree	17.8	8.4	6.5	*	*	*	*	*	*	41.6
Trade qualification or apprenticeship	14.0	*	15.5	*	9.3	*	*	*	*	52.6
Certificate or diploma	83.0	7.7	14.0	*	*	*	*	6.5	*	128.4
Without post-school qualifications(c)	203.7	47.4	40.7	*	27.9	*	*	13.2	9.8	381.6
Attended highest level of secondary school available	34.1	35.6	6.4	*	*	*	*	*	*	94.9
Did not attend highest level of secondary school available	166.9	11.7	33.7	*	23.5	*	*	8.5	6.9	282.6
Left at age—										
16 and over	65.3	6.1	7.5	*	7.4	*	*	*	*	104.7
14 or 15	90.6	5.2	20.8	*	13.6	*	*	*	*	155.8
13 and under	10.9	*	5.4	*	*	*	*	*	*	22.0
Still at school	*	84.6	*	*	*	*	*	*	*	89.8
Total	322.3	149.2	76.7	7.0	43.8	*	*	28.7	18.1	696.2
Males	10.8	76.1	62.6	*	32.7	*	*	14.4	11.9	238.7
Females	311.5	73.1	14.1	5.0	11.1	*	*	14.3	6.2	457.6
NOT IN THE LABOUR FORCE IN THE LAST TWELVE MONTHS										
With post-school qualifications(b)	453.9	18.1	328.5	*	37.2	14.9	28.3	5.8	12.6	905.2
Degree	37.2	10.7	34.1	*	*	*	5.2	*	*	95.1
Trade qualification or apprenticeship	80.6	*	196.6	*	23.3	9.7	*	*	6.0	327.0
Certificate or diploma	324.4	5.6	96.3	*	9.9	*	18.1	*	6.3	469.0
Without post-school qualifications(c)	1,784.1	85.4	697.1	*	121.6	66.4	29.8	7.8	23.6	2,825.0
Attended highest level of secondary school available	167.8	62.9	61.2	*	10.7	*	*	*	*	318.2
Did not attend highest level of secondary school available	1,594.7	22.2	620.7	*	107.1	58.6	25.5	6.0	19.8	2,462.0
Left at age—										
16 and over	307.4	11.9	71.8	*	21.2	11.3	7.2	*	*	436.9
14 or 15	1,023.8	9.9	388.1	*	57.2	29.0	14.9	*	13.1	1,544.3
13 and under	263.5	*	160.7	*	28.7	18.3	*	*	*	480.8
Still at school	*	332.3	*	*	*	*	*	*	*	334.8
Total	2,238.8	435.9	1,026.0	*	158.8	82.1	58.1	14.0	36.5	4,065.1
Males	55.6	221.7	782.4	*	113.5	59.3	16.6	6.0	18.1	1,281.4
Females	2,183.2	214.1	243.6	*	45.4	22.8	41.6	8.1	18.4	2,783.6
TOTAL										
With post-school qualifications(b)	571.0	35.4	364.5	*	52.9	16.8	29.5	19.6	20.9	1,130.1
Degree	55.0	19.1	40.6	*	5.4	*	5.7	5.7	*	136.7
Trade qualification or apprenticeship	94.6	*	212.2	*	32.6	10.3	*	5.9	9.6	379.7
Certificate or diploma	407.4	13.3	110.3	*	14.6	5.8	18.3	8.0	9.5	597.4
Without post-school qualifications(c)	1,987.8	132.8	737.9	*	149.5	68.9	31.0	21.1	33.4	3,206.6
Attended highest level of secondary school available	201.9	98.6	67.6	*	14.7	*	*	6.3	6.7	413.1
Did not attend highest level of secondary school available	1,761.6	33.9	654.4	*	130.6	61.1	26.0	14.6	26.7	2,744.5
Left at age—										
16 and over	372.8	18.0	79.3	*	28.5	11.8	7.6	6.2	5.4	541.6
14 or 15	1,114.4	15.1	408.9	*	70.8	31.1	15.1	7.3	17.7	1,700.1
13 and under	274.4	*	166.1	*	31.3	18.3	*	*	*	502.9
Still at school	*	416.9	*	*	*	*	*	*	*	424.6
Total	2,561.1	585.1	1,102.7	7.8	202.6	86.5	60.5	42.8	54.6	4,761.3
Males	66.5	297.9	845.0	*	146.1	63.6	18.0	20.4	30.0	1,520.1
Females	2,494.6	287.2	257.6	5.0	56.5	23.0	42.5	22.4	24.6	3,241.2

(a) Includes persons whose main activity could not be determined. (b) Includes persons with other post-school qualifications. (c) Includes persons who never attended school and those for whom secondary school qualifications could not be determined.

APPENDIX A

GLOSSARY

Certificate or diploma: completion of an approved certificate or diploma in secretarial or business studies, administration, teaching, nursing, etc.

Degree: a bachelor degree (including honours), a graduate or post-graduate diploma, masters degree or a doctorate.

Educational attainment: measures the highest qualification obtained by the respondent. Qualifications may include those obtained at other than educational institutions (e.g. nursing qualifications obtained at a hospital).

Highest level of secondary school available: the highest level of secondary schooling (or equivalent) offered by the education system at the time the respondent left school.

Main field of study: respondents with a degree; trade qualification or apprenticeship; or a certificate or diploma (as defined) indicated the main field of study for their highest qualification.

Other post-school qualifications: completion of other

types of education, e.g. adult education, preparatory/bridging course or hobby course.

Persons with a post-school qualification: those who had left school and answered 'Yes' to the question: 'Since leaving school have you obtained a trade qualification, certificate, diploma, degree or any other qualification?'. Respondents indicated which of the following groups best described their highest qualification: Degree; Trade qualification or apprenticeship; Certificate or diploma; Other post-school qualification.

Still at school: current school attendance was recorded only for persons aged fifteen to twenty years.

Trade qualification or apprenticeship: completion of an approved trade/technical apprenticeship in fitting and turning, hairdressing, plumbing, carpentry, etc.

Unemployment/population ratio: the number of unemployed persons, for any group, expressed as a percentage of all persons in the same group.

APPENDIX B

EXPLANATORY NOTES

Introduction

The monthly population survey (which is described in *The Labour Force, Australia* (6203.0)) comprises the monthly labour force survey and supplementary topics. This publication contains some results of a supplementary survey run in association with the February 1988 labour force survey conducted throughout Australia.

2. Of the respondents to the labour force survey, those who fell within the scope of the supplementary survey were asked additional questions. They were asked about their highest educational qualifications. For persons with post-school qualifications, the information sought included field of study, and for those without post-school qualifications, it included whether they completed the highest level of secondary schooling available, and if not, at what age they left school.

Scope

3. The scope of this supplementary survey was the same as that used for the labour force survey (described in full in *The Labour Force, Australia* (6203.0)) except that it excluded visitors to private dwellings, students who were boarding at school, some patients in hospitals and sanatoriums and inmates of gaols, reformatories etc.

4. In the tables, "All Persons" refers to all persons within the scope of the survey.

Coverage

5. In the population survey, coverage rules are applied which aim to ensure that each person is associated with only one dwelling, and hence has only one chance of selection. See *The Labour Force, Australia* (6203.0) for more details.

Definitions

6. Definitions of labour force and demographic classifications appearing in this publication are given in *The Labour Force, Australia* (6203.0).

7. Unless otherwise stated, all characteristics referenced in this publication relate to the week before the interview.

Results of the survey

8. Due to differences in the method of estimation used in this supplementary survey and that used in the labour force survey, there are some small variations between estimates in this publication and those in the corresponding issue of *The Labour Force, Australia* (6203.0).

9. The estimates in this publication refer to information collected in the survey month and, due to seasonal factors, may not be representative of other months of the year.

10. A publication *Labour Force Status and Educational Attainment, Australia, February 1988, Summary* (6240.0) containing a summary of the results of the survey was released on 4 May 1988.

11. Results of similar surveys, conducted annually since February 1979, have been published in *Labour Force Status and Educational Attainment, Australia* (6235.0).

12. It is proposed that this survey will be conducted next in February 1989.

Unpublished tables

13. In some cases, the ABS can also make available information which is not published. This information may be made available in one or more of the following forms: microfiche, photocopy, data tape, computer printout, manually extracted tabulation. In general, a charge is made for providing unpublished information. Inquiries should be made to the officer whose name appears in the *Phone Inquiries* section at the front of this publication, or to Information Services in the nearest ABS Office.

Discontinuities in the series

14. Since February 1987 an expanded classification of post-school qualifications has been used. As a result a small number of persons previously categorised as "Degree" or "Other" may now be included in the categories "Trade qualification or apprenticeship" or "Certificate or diploma".

15. Estimates contained in this publication are based on a revised labour force questionnaire introduced in April 1986. The definition of employment was expanded, resulting in decreases in the estimates of unemployed persons and persons not in the labour force. Further information is contained in *The Labour Force, Australia* (6203.0) and in an information paper *Questionnaires Used in the Labour Force Survey* (6232.0).

16. Classification of occupation according to the Australian Standard Classification of Occupations (ASCO 1986) was introduced in the August 1986 labour force survey, replacing the Classification and Classified List of Occupations (CCLO), used in previous surveys. The main difference between these classifications is that ASCO occupations are classified on the basis of the level and specialisation of skill required for the satisfactory performance of primary tasks. For a more detailed explanation of ASCO see the appendix to *The Labour Force, Australia, August 1986* (6203.0).

17. To provide a link between the two classifications, a matrix has been produced and is shown in Table 41 of *The Labour Force, Australia, August 1986* (6203.0). It shows the relationship between ASCO and CCLO at the broadest classification level (the Major Group). The estimates in the matrix are based on a sub-sample of respondents to the May 1986 labour force survey.

Survey sample redesign

18. The labour force survey sample has been redesigned and reselected using information collected in the 1986 Population Census. The new sample was phased in over

the period September 1987 to December 1987. For details, see *Information Paper — Labour Force Survey — Sample Design* (6269.0).

Reliability of the estimates

19. Estimates in this publication are subject to sampling and non-sampling error. For more information refer to the Technical Note, Appendix C.

Related publications

20. Other ABS publications which may be of interest include:

The Labour Force, Australia (6203.0)—issued monthly

Transition from Education to Work, Australia (6227.0)—issued annually

21. Current publications produced by the ABS are listed in the *Catalogue of Publications, Australia* (1101.0). The ABS also issues, on Tuesdays and Fridays, a *Publications Advice* (1105.0) which lists publications to be released in the next few days. The Catalogue and Publications Advice are available from any ABS office.

Symbols and other usages

- * subject to sampling variability too high for most practical uses. See the Technical Note, Appendix C.
- .. not applicable

22. Because estimates have been rounded, discrepancies may occur between sums of the component items and totals.

Electronic services

VIATEL. Key *656# for selected current economic, social and demographic statistics.

AUSSTATS. Thousands of up-to-date time series are available on this ABS on-line service through CSIRONET.

For further information phone the AUSSTATS Help Desk on (062) 52 6017.

TELESTATS. This service provides foreign trade statistics tailored to users' requirements.

Further information is available on (062) 52 5404.

Floppy disk service

Selected ABS statistics are available on floppy disk. Further information is available on (062) 52 6684.

IAN CASTLES
Australian Statistician

APPENDIX C

TECHNICAL NOTE

Estimation procedure

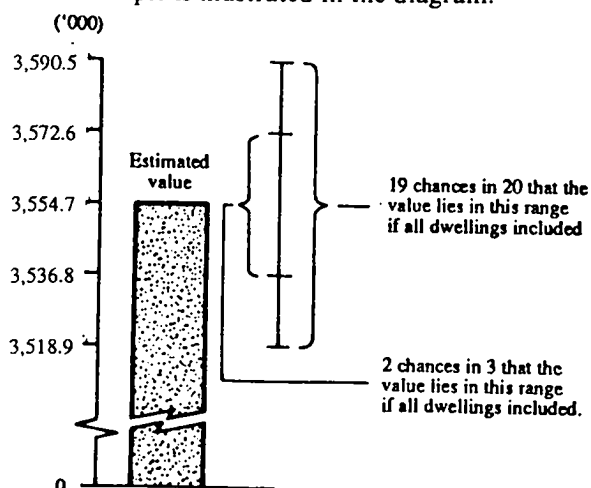
The estimates are derived from the population survey by use of a ratio estimation procedure which ensures that the estimates conform to an independently estimated distribution of the population for each capital city and remainder of State by age and sex, rather than to the corresponding distribution within the sample itself.

Reliability of the estimates

2. Since the estimates in this publication are based on information obtained from occupants of a sample of dwellings, they are subject to sampling variability, that is, they may differ from those that would have been produced if all dwellings had been included in the survey. One measure of the likely difference is given by the *standard error*, which indicates the extent to which an estimate might have varied by chance because only a sample of dwellings was included. There are about two chances in three that a sample estimate will differ by less than one standard error from the number that would have been obtained if all dwellings had been included, and about nineteen chances in twenty that the difference will be less than two standard errors. Another measure of the likely difference is the *relative standard error*, which is obtained by expressing the standard error as a percentage of the estimate.

3. Space does not allow for the separate indication of the standard errors of all estimates in this publication. A table of standard errors for general application is given on the following page. Since they are averages based on calculations for a limited number of past surveys over a wide range of labour force characteristics these figures will not give a precise measure of the standard error of a particular estimate but they will provide an indication of its magnitude.

4. An example of the calculation and the use of standard errors in relation to estimates of persons is as follows. From Table 4 the estimated number of persons in the labour force with post-school qualifications is 3,554,700. Since this estimate is between 2,000,000 and 5,000,000 the standard error for Australia will be between 15,200 and 20,500 in the standard error table and can be approximated as 17,900 (rounded to the nearest 100). Therefore there are about two chances in three that the value that would have been produced if all dwellings had been included in the survey will fall in the range 3,536,800 to 3,572,600 and about nineteen chances in twenty that the value will fall within the range 3,518,900 and 3,590,500. This example is illustrated in the diagram.



5. As can be seen from the standard error table, *the smaller the estimate the higher is the relative standard error*. Very small estimates are thus subject to such high standard errors (relative to the size of the estimate) as to detract seriously from their value for most reasonable uses. In the tables in this publication, estimates less than the lowest levels shown in the standard error table have not been published. Although, in some cases, estimates for these small components can be derived by subtraction, they should not be regarded as reliable.

6. Proportions and percentages formed from the ratio of two estimates are also subject to sampling errors. The size of the error depends on the accuracy of both the numerator and the denominator. A formula to approximate the relative standard error (RSE) of a proportion is given below:

$$RSE (x/y) = \sqrt{[RSE (x)]^2 + [RSE (y)]^2}$$

7. Considering the example from paragraph 4 above, the 3,554,700 persons in the labour force with post-school qualifications represent 75.9 per cent of the 4,684,800 persons in the total population who had post-school qualifications. The standard error for 4,684,800 is approximately 19,900 so the relative standard error is 0.4 per cent. The relative standard error for 3,554,700 is 0.5 per cent. Applying the above formula, the relative standard error of the proportion is $\sqrt{(0.5)^2 + (0.4)^2}$ or 0.3 per cent, giving a standard error for the proportion (75.9 per cent) of 0.2 percentage points. Therefore, there are about two chances in three that the proportion of persons with post-school qualifications is between 75.7 per cent and 76.1 per cent and nineteen chances in twenty the proportion is within the range 75.5 per cent to 76.3 per cent.

8. Published estimates may also be used to calculate the difference between two survey estimates (of numbers or percentages). Such an estimate is subject to sampling error. The sampling error of the difference between two estimates depends on their standard errors and the relationship (correlation) between them. An approximate standard error (SE) of the difference between two estimates (x-y) may be calculated by the following formula:

$$SE (x-y) = \sqrt{[SE (x)]^2 + [SE (y)]^2}$$

While this formula will only be exact for differences between separate and uncorrelated characteristics or sub-populations, it is expected to provide a good approximation for all differences likely to be of interest in this publication.

9. The imprecision due to sampling variability, which is measured by the standard error, should not be confused with inaccuracies that may occur because of imperfections in reporting by interviewers and respondents and errors made in coding and processing data. Inaccuracies of this kind are referred to as the *non-sampling error*, and they may occur in any enumeration, whether it be a full count or a sample. Every effort is made to reduce the non-sampling error to a minimum by careful design of questionnaires, intensive training and supervision of interviewers and efficient operating procedures.

STANDARD ERRORS OF ESTIMATES

Size of estimate —persons—	N.S.W.	Vic.	Qld	S.A.	W.A.	Tas.	N.T.	A.C.T.	Australia	
									—number—	Relative standard error —per cent—
1,500						370				
1,800						410		440		
2,000						420		450		
2,500				620		470	580	490		
3,000				680	720	510	620	530		
3,500				730	770	540	660	560		
4,000			990	770	810	570	690	590		
4,500			1,050	810	860	600	730	610		
5,000			1,100	850	900	630	760	640	1,200	24.3
6,000	1,400	1,450	1,200	920	970	670	810	680	1,350	22.2
10,000	1,800	1,800	1,500	1,150	1,200	820	980	810	1,700	17.2
20,000	2,450	2,450	2,000	1,500	1,600	1,050	1,250	1,000	2,400	12.0
50,000	3,600	3,500	2,900	2,100	2,250	1,450	1,750	1,300	3,650	7.3
100,000	4,800	4,600	3,800	2,700	2,850	1,800	2,250	1,550	4,900	4.9
200,000	6,300	5,900	4,850	3,400	3,650	2,200	2,850	1,850	6,500	3.3
300,000	7,300	6,800	5,600	3,850	4,150	2,450		2,000	7,600	2.5
500,000	8,900	8,000	6,600	4,500	4,850	2,750		2,250	9,300	1.9
1,000,000	11,300	10,000	8,100	5,500	5,900				12,000	1.2
2,000,000	14,400	12,200	9,900	6,600	7,200				15,200	0.8
5,000,000	19,300	15,600	12,500						20,500	0.4
10,000,000	23,800								25,200	0.3
20,000,000									30,600	0.2